

BCL2L13 Ab

[Images\(1\)](#)

Cat.#: DF6248	Concn.: ~1mg/ml	Mol.Wt.: 53kDa
Size:	Source: Rabbit	Clonality: Polyclonal

Application: WB 1:500-1:2000, IHC 1:50-1:200
*The optimal dilutions should be determined by the end user.

Reactivity: Human, Mouse, Rat

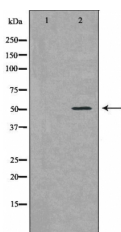
Storage: Rabbit IgG in phosphate buffered saline, pH 7.4, 150mM NaCl, 0.02% sodium azide and 50% glycerol. Store at -20 °C. Stable for 12 months from date of receipt.

Purification: The antiserum was purified by peptide affinity chromatography using SulfoLink™ Coupling Resin (Thermo Fisher Scientific).

Immunogen: A synthesized peptide derived from human BCL2L13, corresponding to a region within the internal amino acids.

Uniprot: Q9BXX5

Description: Apoptosis is defined as a set of cascades which, when initiated, program the cell to undergo lethal changes such as membrane blebbing, mitochondrial breakdown and DNA fragmentation. The Bcl-2 family of proteins plays a central regulatory role in apoptosis. Bcl-rambo, a member of the Bcl-2 family, localizes to the mitochondria and, like other Bcl-2 family members, contains all four BH domains. Although Bcl-rambo shares structural similarity to other Bcl-2 members, it differs from them in its unique C-terminal region. Bcl-rambo has a 250 amino acid sequence containing two tandem repeats that precedes the membrane anchor region at its C-terminus.



Western blot analysis of Jurkat lysates using BCL2L13 Ab. The lane on the left was treated with the antigen-specific peptide.

IMPORTANT: For western blot, incubate membrane with diluted primary Ab in 5% w/v milk, 1X TBS, 0.1% Tween@20 at 4°C with gentle shaking, overnight.

For Research Use Only. Not for use in diagnostic and therapeutic procedures. Not for resale without express authorization.