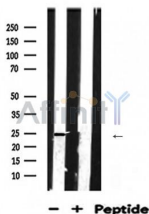


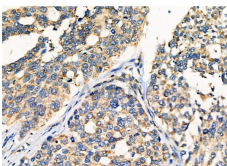
APOA1 Ab

[References\(5\)](#) [Images\(8\)](#)

Cat.#: DF6264 Size:	Concn.: ~1mg/ml Source: Rabbit	Mol.Wt.: 31kDa Clonality: Polyclonal
Application:	WB 1:500-1:2000, IHC 1:50-1:200 *The optimal dilutions should be determined by the end user.	
Reactivity:	Human,Mouse,Rat	
Storage:	Rabbit IgG in phosphate buffered saline , pH 7.4, 150mM NaCl, 0.02% sodium azide and 50% glycerol. Store at -20 °C. Stable for 12 months from date of receipt.	
Purification:	The antiserum was purified by peptide affinity chromatography using SulfoLink™ Coupling Resin (Thermo Fisher Scientific).	
Immunogen:	A synthesized peptide derived from human APOA1, corresponding to a region within N-terminal amino acids.	
Uniprot:	P02647	
Description:	ApoAI (Apolipoprotein A1) is a major component of high density lipoprotein (HDL, the “good cholesterol”) in plasma. It is produced in the liver and small intestine. ApoA1 is a cofactor for lecithin cholesterolacyltransferase (LCAT) that is responsible for the formation of plasma cholesteryl esters and promotes cholesterol efflux from tissues to the liver for excretion. Defects in ApoA1 are associated with high density lipoprotein deficiency (HDL) and systemic non-neuropathic amyloidosis (1-3).	



Western blot analysis of APOA1 expression in Mouse brain lysate. The lane on the right was treated with blocking peptide.



DF6264 at 1/100 staining Human ovarian cancer by IHC-P. The sample was formaldehyde fixed and a heat mediated antigen retrieval step in citrate buffer was performed. The sample was then blocked and incubated with the primary Ab at 4°C overnight. An HRP conjugated anti-Rabbit Ab was used as the secondary Ab.

IMPORTANT: For western blot, incubate membrane with diluted primary Ab in 5% w/v milk , 1X TBS, 0.1% Tween@20 at 4°C with gentle shaking, overnight.

For Research Use Only. Not for use in diagnostic and therapeutic procedures. Not for resale without express authorization.