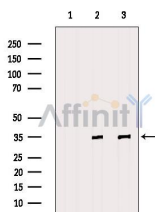


FBL Ab

[Images\(1\)](#)

Cat.#: DF6270	Concn.: ~1mg/ml	Mol.Wt.: 34kDa
Size:	Source: Rabbit	Clonality: Polyclonal

Application:	WB 1:500-1:2000, IHC 1:50-1:200 *The optimal dilutions should be determined by the end user.
Reactivity:	Human, Mouse, Rat
Storage:	Rabbit IgG in phosphate buffered saline, pH 7.4, 150mM NaCl, 0.02% sodium azide and 50% glycerol. Store at -20 °C. Stable for 12 months from date of receipt.
Purification:	The antiserum was purified by peptide affinity chromatography using SulfoLink™ Coupling Resin (Thermo Fisher Scientific).
Immunogen:	A synthesized peptide derived from human FBL, corresponding to a region within the internal amino acids.
Uniprot:	P22087
Description:	Fibrillarin is a 2'-O-methyltransferase located in fibrillar regions and Cajal bodies of the nucleolus, where RNA transcription and pre-RNA processing take place (1,2). Fibrillarin associates with several other structural proteins as well as box C/D snoRNA to form a complex that functions in pre-rRNA processing, pre-rRNA methylation and ribosome assembly. This complex catalyzes site-specific 2'-O-ribose methylation of targeted nucleotides within the rRNA sequence (3,4). The sequence, structure and function of fibrillarin are highly conserved and fibrillarin gene expression is essential for early embryonic development.



Western blot analysis of extracts from various samples, using FBL Ab.
Lane 1: B16F10, treated with blocking peptide;
Lane 2: B16F10;
Lane 3: 293.

IMPORTANT: For western blot, incubate membrane with diluted primary Ab in 5% w/v milk, 1X TBS, 0.1% Tween@20 at 4°C with gentle shaking, overnight.

For Research Use Only. Not for use in diagnostic and therapeutic procedures. Not for resale without express authorization.