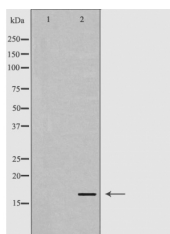


## Calmodulin1/2/3 Ab

[Images\(1\)](#)

Cat.#: DF6295	Concn.: ~1mg/ml	Mol.Wt.: 17kDa
Size:	Source: Rabbit	Clonality: Polyclonal
Application:	WB 1:500-1:2000, IHC 1:50-1:200, IF/ICC 1:100-1:500 *The optimal dilutions should be determined by the end user.	
Reactivity:	Human, Mouse, Rat	
Storage:	Rabbit IgG in phosphate buffered saline, pH 7.4, 150mM NaCl, 0.02% sodium azide and 50% glycerol. Store at -20 °C. Stable for 12 months from date of receipt.	
Purification:	The antiserum was purified by peptide affinity chromatography using SulfoLink™ Coupling Resin (Thermo Fisher Scientific).	
Immunogen:	A synthesized peptide derived from human Calmodulin1/2/3, corresponding to a region within the internal amino acids.	
Uniprot:	P0DP23/P0DP24/P0DP25	
Description:	Calmodulin is a ubiquitously expressed small protein mediating many cellular effects such as short-term and long-term memory, nerve growth, inflammation, apoptosis, muscle contraction and intracellular movement. Upon binding of four Ca <sup>2+</sup> ions, calmodulin undergoes conformational changes, allowing this complex to bind to and activate many enzymes including protein kinases, protein phosphatases, ion channels, Ca <sup>2+</sup> pumps, nitric oxide synthase, inositol triphosphate kinase, and cyclic nucleotide phosphodiesterase (2,3). Since calmodulin binds Ca <sup>2+</sup> in a cooperative fashion, small changes in cytosolic Ca <sup>2+</sup> levels lead to large changes in the level of active calmodulin and its target proteins.	



Western blot analysis of mouse brain lysates using CALM3 Ab. The lane on the left was treated with the antigen-specific peptide.

**IMPORTANT:** For western blot, incubate membrane with diluted primary Ab in 5% w/v milk, 1X TBS, 0.1% Tween@20 at 4°C with gentle shaking, overnight.