

GIPC2 Ab

[Images\(2\)](#)

Cat.#: DF6357	Concn.: ~1mg/ml	Mol.Wt.: 34kDa
Size:	Source: Rabbit	Clonality: Polyclonal

Application: WB 1:500-1:2000, IHC 1:50-1:200
*The optimal dilutions should be determined by the end user.

Reactivity: Human, Mouse, Rat

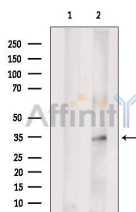
Storage: Rabbit IgG in phosphate buffered saline, pH 7.4, 150mM NaCl, 0.02% sodium azide and 50% glycerol. Store at -20 °C. Stable for 12 months from date of receipt.

Purification: The antiserum was purified by peptide affinity chromatography using SulfoLink™ Coupling Resin (Thermo Fisher Scientific).

Immunogen: A synthesized peptide derived from human GIPC2, corresponding to a region within C-terminal amino acids.

Uniprot: Q8TF65

Description: The eukaryotic PDZ domain is a multifunctional protein-protein interacting motif that is found in a variety of proteins and is involved in both the clustering of signaling molecules and the organization of protein networks. GIPC2 (GIPC PDZ domain containing family, member 2), also known as SEMCAP2, is a 315 amino acid protein that localizes to the cytoplasm and contains one PDZ domain. Expressed at high levels in kidney and colon and at lower levels in adult liver, GIPC2 interacts with SEMA5A and is thought to function as a scaffold protein, possibly modulating cell adhesion and growth factor signaling and playing a role in tumorigenesis.



Western blot analysis of extracts from Myeloma cells, using GIPC2 Ab. The lane on the left was treated with blocking peptide.

IMPORTANT: For western blot, incubate membrane with diluted primary Ab in 5% w/v milk, 1X TBS, 0.1% Tween@20 at 4°C with gentle shaking, overnight.

For Research Use Only. Not for use in diagnostic and therapeutic procedures. Not for resale without express authorization.