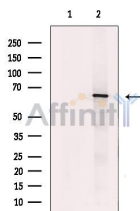


## AMPK alpha Ab

[References\(5\)](#) [Images\(9\)](#)

Cat.#: DF6361	Concn.: ~1mg/ml	Mol.Wt.: 63kDa
Size:	Source: Rabbit	Clonality: Polyclonal
Application:	WB 1:500-1:2000, IHC 1:50-1:200, IF/ICC 1:100 *The optimal dilutions should be determined by the end user.	
Reactivity:	Human, Mouse, Rat	
Storage:	Rabbit IgG in phosphate buffered saline, pH 7.4, 150mM NaCl, 0.02% sodium azide and 50% glycerol. Store at -20 °C. Stable for 12 months from date of receipt.	
Purification:	The antiserum was purified by peptide affinity chromatography using SulfoLink™ Coupling Resin (Thermo Fisher Scientific).	
Immunogen:	A synthesized peptide derived from human AMPK alpha, corresponding to a region within C-terminal amino acids.	
Uniprot:	Q13131/P54646	
Description:	AMP-activated protein kinase (AMPK) is highly conserved from yeast to plants and animals and plays a key role in the regulation of energy homeostasis. AMPK is a heterotrimeric complex composed of a catalytic $\alpha$ subunit and regulatory $\beta$ and $\gamma$ subunits, each of which is encoded by two or three distinct genes ( $\beta$ 1, 2; $\gamma$ 1, 2; $\gamma$ 1, 2, 3). The kinase is activated by an elevated AMP/ATP ratio due to cellular and environmental stress, such as heat shock, hypoxia, and ischemia. The tumor suppressor LKB1, in association with accessory proteins STRAD and MO25, phosphorylates AMPK $\alpha$ at Thr172 in the activation loop, and this phosphorylation is required for AMPK activation (3-5). AMPK $\alpha$ is also phosphorylated at Thr258 and Ser485 (for $\gamma$ 1; Ser491 for $\gamma$ 2).	



Western blot analysis of extracts from PANC1, using AMPK alpha Ab. The lane on the left was treated with blocking peptide.

**IMPORTANT:** For western blot, incubate membrane with diluted primary Ab in 5% w/v milk, 1X TBS, 0.1% Tween@20 at 4°C with gentle shaking, overnight.

---

procedures. Not for resale without express authorization.