

TET1 Ab

[References\(3\)](#) [Images\(8\)](#)

Cat.#: DF6428
Size:

Concn.: ~1mg/ml
Source: Rabbit

Mol.Wt.: 235kDa
Clonality: Polyclonal

Application:

WB 1:500-1:2000, IHC 1:50-1:200

*The optimal dilutions should be determined by the end user.

Reactivity:

Human,Mouse,Rat

Storage:

Rabbit IgG in phosphate buffered saline , pH 7.4, 150mM NaCl, 0.02% sodium azide and 50% glycerol. Store at -20 °C. Stable for 12 months from date of receipt.

Purification:

The antiserum was purified by peptide affinity chromatography using SulfoLink™ Coupling Resin (Thermo Fisher Scientific).

Immunogen:

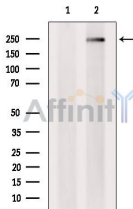
A synthesized peptide derived from human TET1, corresponding to a region within the internal amino acids.

Uniprot:

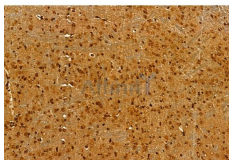
Q8NFU7

Description:

TET1 (tet oncogene 1), also known as LCX or CXXC6, is a 2,136 amino acid protein that localizes to the nucleus and contains one CXXC-type zinc finger. Expressed in adult ovary, thymus and skeletal muscle and also present in fetal lung, heart and brain, TET1 is thought to play a role in the development of fetal organs and may also be involvement in the pathogenesis and metastasis of acute myeloid leukemia (AML). The gene encoding TET1 maps to human chromosome 10, which houses over 1,200 genes and comprises nearly 4.5% of the human genome.



Western blot analysis of extracts from EC304, using TET1 Ab. The lane on the left was treated with blocking peptide.



DF6428 at 1/100 staining Mouse brain tissue by IHC-P. The sample was formaldehyde fixed and a heat mediated antigen retrieval step in citrate buffer was performed. The sample was then blocked and incubated with the primary Ab at 4°C overnight. An HRP conjugated anti-Rabbit Ab was used as the secondary Ab.

IMPORTANT: For western blot, incubate membrane with diluted primary Ab in 5% w/v milk , 1X TBS, 0.1% Tween@20 at 4°C with gentle shaking, overnight.

For Research Use Only. Not for use in diagnostic and therapeutic procedures. Not for resale without express authorization.