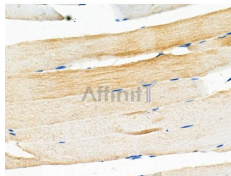


## ADIPOR1 Ab

[References\(2\)](#) [Images\(2\)](#)

Cat.#: DF6430	Concn.: ~1mg/ml	Mol.Wt.: 43kDa
Size:	Source: Rabbit	Clonality: Polyclonal
Application:	WB 1:500-1:2000, IHC 1:50-1:200 *The optimal dilutions should be determined by the end user.	
Reactivity:	Human, Mouse, Rat	
Storage:	Rabbit IgG in phosphate buffered saline, pH 7.4, 150mM NaCl, 0.02% sodium azide and 50% glycerol. Store at -20 °C. Stable for 12 months from date of receipt.	
Purification:	The antiserum was purified by peptide affinity chromatography using SulfoLink™ Coupling Resin (Thermo Fisher Scientific).	
Immunogen:	A synthesized peptide derived from human ADIPOR1, corresponding to a region within C-terminal amino acids.	
Uniprot:	Q96A54	
Description:	Adiponectin is a circulating hormone secreted by adipocytes that improves the metabolism of glucose and lipids, and is expressed at low levels in those with obesity and diabetes. Adiponectin receptors AdipoR1 and AdipoR2, also designated progestin and adipoQ receptor family members I and II, respectively, regulate fatty acid oxidation and the uptake of glucose by adiponectin. Each receptor activates a unique set of signaling molecules including AMPK, p38 MAPK and PPAR. AdipoR1 has a high-affinity for globular adiponectin and low-affinity for full-length adiponectin, while AdipoR2 has an intermediate affinity for both forms. AdipoR1 and AdipoR2 are mainly expressed in liver and muscle.	



DF6430 at 1/100 staining Mouse muscle tissue by IHC-P. The sample was formaldehyde fixed and a heat mediated antigen retrieval step in citrate buffer was performed. The sample was then blocked and incubated with the primary Ab at 4°C overnight. An HRP conjugated anti-Rabbit Ab was used as the secondary Ab.

**IMPORTANT:** For western blot, incubate membrane with diluted primary Ab in 5% w/v milk, 1X TBS, 0.1% Tween@20 at 4°C with gentle shaking, overnight.

For Research Use Only. Not for use in diagnostic and therapeutic procedures. Not for resale without express authorization.