

## IGF2BP1 Ab

[References\(2\)](#) [Images\(5\)](#)

Cat.#: DF6436	Concn.: ~1mg/ml	Mol.Wt.: 63kDa
Size:	Source: Rabbit	Clonality: Polyclonal

**Application:** WB 1:500-1:2000, IHC 1:50-1:200  
\*The optimal dilutions should be determined by the end user.

**Reactivity:** Human, Mouse, Rat

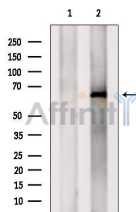
**Storage:** Rabbit IgG in phosphate buffered saline, pH 7.4, 150mM NaCl, 0.02% sodium azide and 50% glycerol. Store at -20 °C. Stable for 12 months from date of receipt.

**Purification:** The antiserum was purified by peptide affinity chromatography using SulfoLink™ Coupling Resin (Thermo Fisher Scientific).

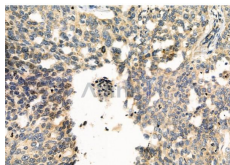
**Immunogen:** A synthesized peptide derived from human IGF2BP1, corresponding to a region within N-terminal amino acids.

**Uniprot:** Q9NZI8

**Description:** Insulin-like growth factor-II mRNA-binding proteins (IMPs) belong to a family of zipcode-binding proteins (1,2). Three members of this family, IMP1, IMP2, and IMP3, have been identified (1,2). They contain two RNA recognition motifs, four K homology domains, and were found to function in mRNA localization, turnover, and translation control (1,2). Research studies have implicated these proteins in a variety of physiological and pathological processes, such as growth and development, testicular neoplasia, and melanocytic neoplasia.



Western blot analysis of extracts from MCF7, using IGF2BP1 Ab. The lane on the left was treated with blocking peptide.



DF6436 at 1/100 staining Human ovarian cancer and adjacent normal tissues by IHC-P. The sample was formaldehyde fixed and a heat mediated antigen retrieval step in citrate buffer was performed. The sample was then blocked and incubated with the primary Ab at 4°C overnight. An HRP conjugated anti-Rabbit Ab was used as the secondary Ab.

**IMPORTANT:** For western blot, incubate membrane with diluted primary Ab in 5% w/v milk , 1X TBS, 0.1% Tween@20 at 4°C with gentle shaking, overnight.

For Research Use Only. Not for use in diagnostic and therapeutic procedures. Not for resale without express authorization.