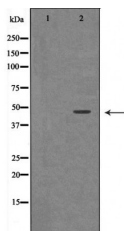


Renin Ab

[Images\(1\)](#)

Cat.#: DF6480	Concn.: ~1mg/ml	Mol.Wt.: 45kDa
Size:	Source: Rabbit	Clonality: Polyclonal
Application:	WB 1:500-1:2000, IHC 1:50-1:200, IF/ICC 1:100-1:500 *The optimal dilutions should be determined by the end user.	
Reactivity:	Human, Mouse, Rat	
Storage:	Rabbit IgG in phosphate buffered saline, pH 7.4, 150mM NaCl, 0.02% sodium azide and 50% glycerol. Store at -20 °C. Stable for 12 months from date of receipt.	
Purification:	The antiserum was purified by peptide affinity chromatography using SulfoLink™ Coupling Resin (Thermo Fisher Scientific).	
Immunogen:	A synthesized peptide derived from human Renin, corresponding to a region within the internal amino acids.	
Uniprot:	P00797	
Description:	Renin is a secreted proteinase whose enzymatic activity is to convert angiotensinogen into angiotensin I in the plasma, initiating a process that results in an elevation of blood pressure and increased sodium retention by the kidney. Renin is synthesized in kidney as a precursor, prorenin, which is released into circulation. Both renin and prorenin can bind to (pro)renin receptor and induce angiotensin-independent signaling events leading to activation of MAPKs and up-regulation of TGF- β 1 and matrix proteins (2, 3). Defects in renin can cause renal tubular dysgenesis, a severe autosomal recessive disorder of renal tubular development (4, 5).	



Western blot analysis of Hepg2 whole cell lysates, using REN Ab. The lane on the left was treated with the antigen-specific peptide.

IMPORTANT: For western blot, incubate membrane with diluted primary Ab in 5% w/v milk, 1X TBS, 0.1% Tween@20 at 4°C with gentle shaking, overnight.

For Research Use Only. Not for use in diagnostic and therapeutic procedures. Not for resale without express authorization.