

## IL7 Ab

[References\(2\)](#) [Images\(3\)](#)

Cat.#: DF6530  
Size:

Concn.: ~1mg/ml  
Source: Rabbit

Mol.Wt.: 20kDa  
Clonality: Polyclonal

Application:

WB 1:500-1:2000, IHC 1:50-1:200  
\*The optimal dilutions should be determined by the end user.

Reactivity:

Human,Mouse,Rat

Storage:

Rabbit IgG in phosphate buffered saline , pH 7.4, 150mM NaCl, 0.02% sodium azide and 50% glycerol. Store at -20 °C. Stable for 12 months from date of receipt.

Purification:

The antiserum was purified by peptide affinity chromatography using SulfoLink™ Coupling Resin (Thermo Fisher Scientific).

Immunogen:

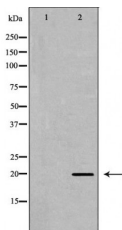
A synthesized peptide derived from human IL7, corresponding to a region within C-terminal amino acids.

Uniprot:

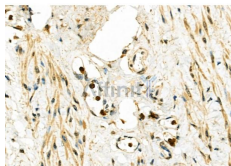
P13232

Description:

IL-7 plays a key role in lymphopoiesis and lymphoid homeostasis . Stromal and epithelial cells within the bone marrow and thymus produce IL-7 . The primary targets of IL-7 are T cells, B cells, and dendritic cells . IL-7 is crucial for T cell development, the importance of which is underscored by the lack of T cells in both mice and humans that are deficient in IL-7/IL-7R signaling (1,2). While IL-7 appears to be required for B cell development in mice, the role of IL-7 in human B cell development is unclear (1,3). In addition to its effects on T cell lymphopoiesis, IL-7 promotes the maintenance and survival of na ve and memory ?? T cells, as well as ?? T cells . The IL-7 receptor is a heterodimer of the common ? chain, ?c, and the IL-7-specific IL-7R? .



Western blot analysis of Hepg2 whole cell lysates, using IL7 Ab. The lane on the left was treated with the antigen-specific peptide.



DF6530 at 1/100 staining Human ovarian cancer and adjacent normal tissues by IHC-P. The sample was formaldehyde fixed and a heat mediated antigen retrieval step in citrate buffer was performed. The sample was then blocked and incubated with the primary Ab at 4°C overnight. An HRP conjugated anti-Rabbit Ab was used as the secondary Ab.

**IMPORTANT:** For western blot, incubate membrane with diluted primary Ab in 5% w/v milk , 1X TBS, 0.1% Tween@20 at 4°C with gentle shaking, overnight.

For Research Use Only. Not for use in diagnostic and therapeutic procedures. Not for resale without express authorization.