

CCL4 Ab

[References\(2\)](#) [Images\(3\)](#)

Cat.#: DF6545
Size:

Concn.: ~1mg/ml
Source: Rabbit

Mol.Wt.: 10kDa
Clonality: Polyclonal

Application:

WB 1:500-1:2000, IHC 1:50-1:200, IF/ICC 1:100-1:500

*The optimal dilutions should be determined by the end user.

Reactivity:

Human,Mouse,Rat

Storage:

Rabbit IgG in phosphate buffered saline , pH 7.4, 150mM NaCl, 0.02% sodium azide and 50% glycerol. Store at -20 °C. Stable for 12 months from date of receipt.

Purification:

The antiserum was purified by peptide affinity chromatography using SulfoLink™ Coupling Resin (Thermo Fisher Scientific).

Immunogen:

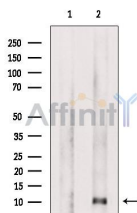
A synthesized peptide derived from human CCL4, corresponding to a region within the internal amino acids.

Uniprot:

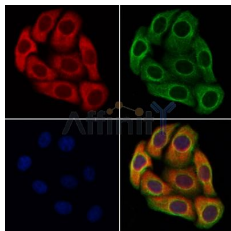
P13236

Description:

Chemokines are members of a superfamily of small inducible, secreted, pro-inflammatory cytokines. Members of the chemokine family exhibit 20 to 50% homology in their predicted amino acid sequences and are divided into four subfamilies. In C-C (or b) subfamily, the first two cysteines are adjacent. C-C chemokines are chemoattractants and activators for monocytes and T cells. C-C subfamily members include macrophage inflammatory protein (MIP)-1 , MIP-1?, MIP-2, MIP-3 , MIP-3?, MIP-4, HCC-1, MIP-5 (or HCC-2), RANTES, MCP-1/2/3 (and the murine homologs JE and MARC), I-309, murine C10 and TCA3. Research has shown that MIP-1? is more selective than MIP-1 , primarily attracting CD4+ T lymphocytes, with a preference for T cells of the naive phenotype.



Western blot analysis of extracts from MCF7, using CCL4 Ab. The lane on the left was treated with blocking peptide.



DF6545 staining HeLa cells by IF/ICC. The samples were fixed with PFA and permeabilized in 0.1% Triton X-100, then blocked in 10% serum for 45 minutes at 25°C. Samples were then incubated with primary Ab(DF6545 1:200) and mouse anti-beta tubulin Ab(T0023 1:200) for 1 hour at 37°C. An AlexaFluor594 conjugated goat anti-rabbit IgG(H+L) Ab(Red) and an AlexaFluor488 conjugated goat anti-mouse IgG(H+L) Ab(Green) were used as the secondary Ab.

The nuclear counter stain is DAPI(blue).

IMPORTANT: For western blot, incubate membrane with diluted primary Ab in 5% w/v milk, 1X TBS, 0.1% Tween@20 at 4°C with gentle shaking, overnight.

For Research Use Only. Not for use in diagnostic and therapeutic procedures. Not for resale without express authorization.