

## SERPINF1 Ab

[References\(6\)](#) [Images\(8\)](#)

Cat.#: DF6547	Concn.: ~1mg/ml	Mol.Wt.: 46kDa
Size:	Source: Rabbit	Clonality: Polyclonal

**Application:** WB 1:500-1:2000, IHC 1:50-1:200, IF/ICC 1:100-1:500  
 \*The optimal dilutions should be determined by the end user.

**Reactivity:** Human,Mouse,Rat

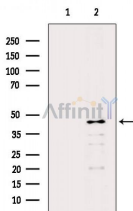
**Storage:** Rabbit IgG in phosphate buffered saline , pH 7.4, 150mM NaCl, 0.02% sodium azide and 50% glycerol. Store at -20 °C. Stable for 12 months from date of receipt.

**Purification:** The antiserum was purified by peptide affinity chromatography using SulfoLink™ Coupling Resin (Thermo Fisher Scientific).

**Immunogen:** A synthesized peptide derived from human SERPINF1, corresponding to a region within C-terminal amino acids.

**Uniprot:** P36955

**Description:** Pigment epithelium-derived growth factor (PEDF), also known as EPC-1 (early population doubling level cDNA-1), is a glycoprotein found naturally in the normal eye. PEDF has reported neuroprotective and differentiation properties and is secreted in abundance by retinal pigment epithelium cells. It belongs to the serine protease inhibitor (Serp) superfamily and has been reported to inhibit angiogenesis and proliferation of several cell types. The “pooling” of PEDF within the interphotoreceptor matrix places this molecule in a prime physical location to affect the underlying neural retina. Additionally, PEDF induces neuronal differentiation and promotes survival of neurons of the central nervous system from degeneration caused by serum withdrawal or glutamate cytotoxicity.



Western blot analysis of extracts from Rat liver, using SERPINF1 Ab. The lane on the left was treated with blocking peptide.

**IMPORTANT:** For western blot, incubate membrane with diluted primary Ab in 5% w/v milk , 1X TBS, 0.1% Tween@20 at 4°C with gentle shaking, overnight.



**Affinity Biosciences**  
website: [www.affbiotech.com](http://www.affbiotech.com)  
order: [order@affbiotech.com](mailto:order@affbiotech.com)

---

procedures. Not for resale without express authorization.