

# OCT1 Ab

[Images\(3\)](#)

Cat.#: DF6553	Concn.: ~1mg/ml	Mol.Wt.: 76kDa
Size:	Source: Rabbit	Clonality: Polyclonal

**Application:** WB 1:500-1:2000, IHC 1:50-1:200, IF/ICC 1:100-1:500  
 \*The optimal dilutions should be determined by the end user.

**Reactivity:** Human,Mouse,Rat

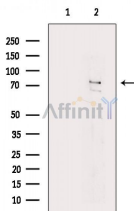
**Storage:** Rabbit IgG in phosphate buffered saline , pH 7.4, 150mM NaCl, 0.02% sodium azide and 50% glycerol. Store at -20 °C. Stable for 12 months from date of receipt.

**Purification:** The antiserum was purified by peptide affinity chromatography using SulfoLink™ Coupling Resin (Thermo Fisher Scientific).

**Immunogen:** A synthesized peptide derived from human OCT1, corresponding to a region within the internal amino acids.

**Uniprot:** P14859

**Description:** Oct-1 (POU2F1) is a ubiquitously expressed, octamer-binding transcription factor containing a POU domain with a homeobox subdomain . Oct-1 has been shown to interact with several transcription factors in mediating specific gene expression, including SNAPc , OBF-1 (a B-cell transcriptional coactivator protein) , TFIIB , and TBP (TATA-box-binding protein) . Its POU DNA-binding domain allows Oct-1 the flexibility to facilitate the binding and recruitment of several tissue-specific cofactors to either positively or negatively regulate a variety of genes, exerting an important role in development .



Western blot analysis of extracts from HepG2 cells(H2O2 treatment), using OCT1 Ab. The lane on the left was treated with blocking peptide.

**IMPORTANT:** For western blot, incubate membrane with diluted primary Ab in 5% w/v milk , 1X TBS, 0.1% Tween@20 at 4°C with gentle shaking, overnight.

For Research Use Only. Not for use in diagnostic and therapeutic procedures. Not for resale without express authorization.