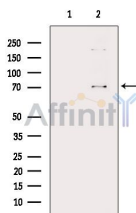


DUSP16 Ab

[Images\(2\)](#)

Cat.#: AF0522	Concn.: ~1mg/ml	Mol.Wt.: 73kDa
Size:	Source: Rabbit	Clonality: Polyclonal
Application:	WB 1:500-1:2000, IF/ICC 1:100-1:500 *The optimal dilutions should be determined by the end user.	
Reactivity:	Human, Mouse, Monkey	
Storage:	Mouse IgG1 in phosphate buffered saline (without Mg ²⁺ and Ca ²⁺), pH 7.4, 150mM NaCl, 0.02% sodium azide and 50% glycerol. Store at -20 °C. Stable for 12 months from date of receipt.	
Purification:	The antiserum was purified by peptide affinity chromatography using SulfoLink™ Coupling Resin (Thermo Fisher Scientific).	
Immunogen:	A synthesized peptide derived from human DUSP16, corresponding to a region within the internal amino acids.	
Uniprot:	Q9BY84	
Description:	The activation of mitogen-activated protein kinase (MAPK) cascades transduces various extracellular signals to the nucleus to induce gene expression, cell proliferation, differentiation, cell cycle arrest, and apoptosis. For full activation of MAPKs, dual-specificity kinases phosphorylate both threonine and tyrosine residues in MAPK TXY motifs. MKPs are dual-specificity phosphatases that dephosphorylate the TXY motif, thereby negatively regulating MAPK activity.[supplied by OMIM]	



Western blot analysis of extracts from VERO cells (heat-shock treatment), using DUSP16 Ab. The lane on the left was treated with blocking peptide.

IMPORTANT: For western blot, incubate membrane with diluted primary Ab in 5% w/v milk, 1X TBS, 0.1% Tween@20 at 4°C with gentle shaking, overnight.

For Research Use Only. Not for use in diagnostic and therapeutic procedures. Not for resale without express authorization.