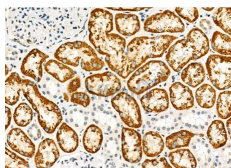


SCNN1B Ab

[References\(2\)](#) [Images\(3\)](#)

Cat.#: DF6601	Concn.: ~1mg/ml	Mol.Wt.: 73kDa
Size:	Source: Rabbit	Clonality: Polyclonal
Application:	WB 1:500-1:2000, IHC 1:50-1:200, IF/ICC 1:100-1:500 *The optimal dilutions should be determined by the end user.	
Reactivity:	Human, Mouse, Rat	
Storage:	Rabbit IgG in phosphate buffered saline, pH 7.4, 150mM NaCl, 0.02% sodium azide and 50% glycerol. Store at -20 °C. Stable for 12 months from date of receipt.	
Purification:	The antiserum was purified by peptide affinity chromatography using SulfoLink™ Coupling Resin (Thermo Fisher Scientific).	
Immunogen:	A synthesized peptide derived from human SCNN1B, corresponding to a region within C-terminal amino acids.	
Uniprot:	P51168	
Description:	SCNN1B, also named as SCNEB, ENaCB, Beta-NaCH and Beta-ENaC, belongs to the amiloride-sensitive sodium channel (TC 1.A.6) family and SCNN1B subfamily. Sodium permeable non-voltage-sensitive ion channel is inhibited by the diuretic amiloride. SCNN1B mediates the electrodiffusion of the luminal sodium (and water, which follows osmotically) through the apical membrane of epithelial cells. It controls the reabsorption of sodium in kidney, colon, lung and sweat glands. SCNN1B plays a role in taste perception.	



DF6601 at 1/100 staining Human kidney cancer and adjacent normal tissues by IHC-P. The sample was formaldehyde fixed and a heat mediated antigen retrieval step in citrate buffer was performed. The sample was then blocked and incubated with the primary Ab at 4°C overnight. An HRP conjugated anti-Rabbit Ab was used as the secondary Ab.

IMPORTANT: For western blot, incubate membrane with diluted primary Ab in 5% w/v milk, 1X TBS, 0.1% Tween@20 at 4°C with gentle shaking, overnight.

For Research Use Only. Not for use in diagnostic and therapeutic procedures. Not for resale without express authorization.