

## ICAM1 Ab

[References\(1\)](#) [Images\(2\)](#)

Cat.#: BF0097	Concn.: ~1mg/ml	Mol.Wt.: 57.8kDa
Size:	Source: Mouse	Clonality: Monoclonal

Application: ELISA 1:10000, WB 1:500-1:2000  
\*The optimal dilutions should be determined by the end user.

Reactivity: Human

Storage: Mouse IgG1 in phosphate buffered saline (without Mg<sup>2+</sup> and Ca<sup>2+</sup>), pH 7.4, 150mM NaCl, 0.02% sodium azide and 50% glycerol. Store at -20 °C. Stable for 12 months from date of receipt.

Purification: Affinity-chromatography.

Immunogen: Purified recombinant fragment of human ICAM1 expressed in E. Coli.

Uniprot: P05362

Description: ICAM1 is a 85-110 kDa single chain type 1 integral membrane glycoprotein with an extracellular domain of five immunoglobulin superfamily repeats, a transmembrane region and a cytoplasmic domain. It shares considerable amino acid sequence homology with ICAM3 and with ICAM2. ICAM1 is expressed by activated endothelial cells. It is detected on cells of many other lineages (e.g. epithelial cells, fibroblasts, chondrocytes, B lymphocytes, T lymphocytes (low), monocytes, macrophages, dendritic cells and neutrophils), with lower levels that increase in inflammation.

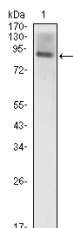


Figure 1: Western blot analysis using ICAM1 mouse mAb against ICAM1(AA: 28-480)-hIgGFc transfected HEK293 (1) cell lysate.

**IMPORTANT:** For western blot, incubate membrane with diluted primary Ab in 5% w/v milk, 1X TBS, 0.1% Tween@20 at 4°C with gentle shaking, overnight.

For Research Use Only. Not for use in diagnostic and therapeutic procedures. Not for resale without express authorization.