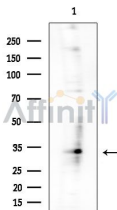


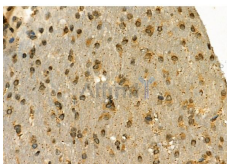
POLR2C Ab

[Images\(6\)](#)

| | | |
|---------------|--|-----------------------|
| Cat.#: DF6617 | Concn.: ~1mg/ml | Mol.Wt.: 31kDa |
| Size: | Source: Rabbit | Clonality: Polyclonal |
| Application: | WB 1:500-1:2000, IHC 1:50-1:200 *The optimal dilutions should be determined by the end user. | |
| Reactivity: | Human,Mouse,Rat | |
| Storage: | Rabbit IgG in phosphate buffered saline , pH 7.4, 150mM NaCl, 0.02% sodium azide and 50% glycerol. Store at -20 °C. Stable for 12 months from date of receipt. | |
| Purification: | The antiserum was purified by peptide affinity chromatography using SulfoLink™ Coupling Resin (Thermo Fisher Scientific). | |
| Immunogen: | A synthesized peptide derived from human POLR2C, corresponding to a region within the internal amino acids. | |
| Uniprot: | P19387 | |
| Description: | This gene encodes the third largest subunit of RNA polymerase II, the polymerase responsible for synthesizing messenger RNA in eukaryotes. The product of this gene contains a cysteine rich region and exists as a heterodimer with another polymerase subunit, POLR2J. These two subunits form a core subassembly unit of the polymerase. A pseudogene has been identified on chromosome 21. | |



Western blot analysis of extracts from EC304 cells, using POLR2C Ab at 1/1000 dilution.
Observed bands:27kD.



DF6617 at 1/100 staining Rat brain tissue by IHC-P. The sample was formaldehyde fixed and a heat mediated antigen retrieval step in citrate buffer was performed. The sample was then blocked and incubated with the primary Ab at 4°C overnight. An HRP conjugated anti-Rabbit Ab was used as the secondary Ab.

IMPORTANT: For western blot, incubate membrane with diluted primary Ab

in 5% w/v milk , 1X TBS, 0.1% Tween@20 at 4°C with gentle shaking,
overnight.

For Research Use Only. Not for use in diagnostic and therapeutic
procedures. Not for resale without express authorization.