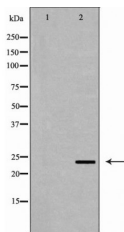


## ORM1 Ab

[References\(1\)](#) [Images\(1\)](#)

Cat.#: DF6623	Concn.: ~1mg/ml	Mol.Wt.: 24kDa, 35-43kDa(Glycosylated)
Size:	Source: Rabbit	Clonality: Polyclonal
Application:	WB 1:500-1:2000, IHC 1:50-1:200 *The optimal dilutions should be determined by the end user.	
Reactivity:	Human,Mouse	
Storage:	Rabbit IgG in phosphate buffered saline , pH 7.4, 150mM NaCl, 0.02% sodium azide and 50% glycerol. Store at -20 °C. Stable for 12 months from date of receipt.	
Purification:	The antiserum was purified by peptide affinity chromatography using SulfoLink™ Coupling Resin (Thermo Fisher Scientific).	
Immunogen:	A synthesized peptide derived from human ORM1, corresponding to a region within the internal amino acids.	
Uniprot:	P02763	
Description:	Alpha-1-acid glycoprotein 1 (AGP1), also called orosomucoid-1 (ORM1), is a glycoprotein synthesized mostly by hepatocytes and present in human plasma. ORM1 is an acute-phase reactant protein controlled by glucocorticoids, interleukin-1 and interleukin-6, and increase up to 5-50 times upon infection and/or inflammation. Anti-apoptotic effect and role as immunomodulator of ORM have been reported. ORM is an important carrier for synthetic drugs and influences their distribution and availability in the body. This antibody recognizes a band about 44 kDa in human plasma which may be due to the glycosylation of ORM1 or the dimer formation of the protein.	



Western blot analysis of HepG2 cell lysates, using ORM1 Ab. The lane on the left was treated with the antigen-specific peptide.

**IMPORTANT:** For western blot, incubate membrane with diluted primary Ab in 5% w/v milk , 1X TBS, 0.1% Tween@20 at 4°C with gentle shaking, overnight.

---

procedures. Not for resale without express authorization.