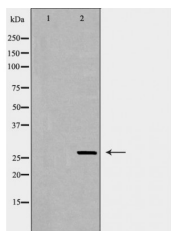


## EIF6 Ab

[Images\(1\)](#)

Cat.#: DF6635	Concn.: ~1mg/ml	Mol.Wt.: 27kDa
Size:	Source: Rabbit	Clonality: Polyclonal
Application:	WB 1:500-1:2000, IHC 1:50-1:200 *The optimal dilutions should be determined by the end user.	
Reactivity:	Human,Mouse,Rat	
Storage:	Rabbit IgG in phosphate buffered saline , pH 7.4, 150mM NaCl, 0.02% sodium azide and 50% glycerol. Store at -20 °C. Stable for 12 months from date of receipt.	
Purification:	The antiserum was purified by peptide affinity chromatography using SulfoLink™ Coupling Resin (Thermo Fisher Scientific).	
Immunogen:	A synthesized peptide derived from human EIF6, corresponding to a region within C-terminal amino acids.	
Uniprot:	P56537	
Description:	Eukaryotic initiation factor 6 (eIF6) is required for the 60S ribosomal subunit assembly in the nucleolus . In the cytoplasm, this protein is bound to 60S ribosome subunits and prevents them from joining 40S ribosome subunits to form 80S ribosomes . eIF6 is also shown to associate with the RNA-induced silencing complex (RISC) . Deletion of eIF6 abolishes the miRNA-mediated gene silencing . eIF6 may play its essential role in miRNA-mediated silencing by inhibiting translation initiation or ribosome recycling .	



Western blot analysis of COLO320 cell lysates, using EIF6 Ab. The lane on the left was treated with the antigen-specific peptide.

**IMPORTANT:** For western blot, incubate membrane with diluted primary Ab in 5% w/v milk , 1X TBS, 0.1% Tween@20 at 4°C with gentle shaking, overnight.

For Research Use Only. Not for use in diagnostic and therapeutic procedures. Not for resale without express authorization.