

CADM1 Ab

[References\(1\)](#) [Images\(4\)](#)

Cat.#: DF6679 Concn.: ~1mg/ml Mol.Wt.: 49kDa
Size: Source: Rabbit Clonality: Polyclonal

Application: WB 1:500-1:2000, IHC 1:50-1:200, IF/ICC 1:100-1:500
*The optimal dilutions should be determined by the end user.

Reactivity: Human,Mouse,Rat

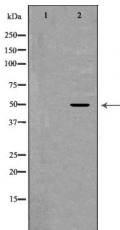
Storage: Rabbit IgG in phosphate buffered saline , pH 7.4, 150mM NaCl, 0.02% sodium azide and 50% glycerol. Store at -20 °C. Stable for 12 months from date of receipt.

Purification: The antiserum was purified by peptide affinity chromatography using SulfoLink™ Coupling Resin (Thermo Fisher Scientific).

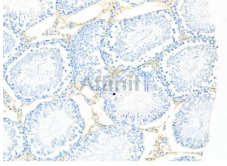
Immunogen: A synthesized peptide derived from human CADM1, corresponding to a region within the internal amino acids.

Uniprot: Q9BY67

Description: Homologous to the poliovirus receptor (PVR/CD155), the Nectin immunoglobulin superfamily comprises four known isoforms, Nectin 1, 2, 3 and 4 (also designated TSLC1). TSLC1 is encoded by a tumor-suppressor gene in human non-small-cell lung cancer mapping to chromosome 11q23.2. The TSLC1 protein is an N-linked membrane glycoprotein that co-localizes with the Actin filament-binding protein, afadin, at cadherin-based adherens junctions in MDCKII epithelial cells. TSLC1 also interacts with the tumor-suppressor gene product DAL-1 (for differentially expressed in adenocarcinoma of the lung protein 1) to target Actin rearrangement and cellular motility. TSLC1 may also form homodimers that function in homophilic, intracellular adhesion.



Western blot analysis of Mouse brain lysates, using CADM1 Ab. The lane on the left was treated with the antigen-specific peptide.



DF6679 at 1/100 staining Rat testis tissue by IHC-P. The sample was formaldehyde fixed and a heat mediated antigen retrieval step in citrate buffer was performed. The sample was then blocked and incubated with the primary Ab at 4°C overnight. An HRP conjugated anti-Rabbit Ab was used as the secondary Ab.

IMPORTANT: For western blot, incubate membrane with diluted primary Ab in 5% w/v milk , 1X TBS, 0.1% Tween@20 at 4°C with gentle shaking, overnight.

For Research Use Only. Not for use in diagnostic and therapeutic procedures. Not for resale without express authorization.