

## CD19 Ab

[Images\(1\)](#)

Cat.#: BF0411	Concn.: ~1mg/ml	Mol.Wt.: 61kDa
Size:	Source: Mouse	Clonality: Monoclonal

Application: ELISA 1:10000, IF/ICC 1:200-1:1000, FCM 1:200-1:400  
\*The optimal dilutions should be determined by the end user.

Reactivity: Human

Storage: Mouse IgG1 in phosphate buffered saline (without Mg2+ and Ca2+), pH 7.4, 150mM NaCl, 0.02% sodium azide and 50% glycerol. Store at -20 °C. Stable for 12 months from date of receipt.

Purification: Affinity-chromatography.

Immunogen: Purified recombinant fragment of human CD19 expressed in E. Coli.

Uniprot: P15391

Description: The CD19 antigen (95kDa) is expressed from the earliest stage of B progenitor development, on all peripheral B cells including germinal centre B cells, and all B cell lines and B cell leukaemia tested. T cell and monocytic cell lines are negative and the antigen is lost on B cell maturation to plasma cells. The antigen is a type I integral membrane glycoprotein whose in vitro inhibition will influence B cell activation and proliferation.

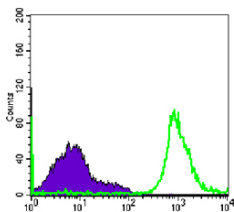


Figure 1: Flow cytometric analysis of Raji cells using CD19 mouse mAb (green) and negative control (purple).

For Research Use Only. Not for use in diagnostic and therapeutic procedures. Not for resale without express authorization.