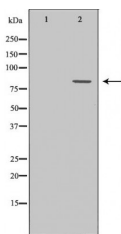


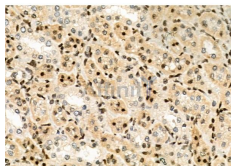
POLI Ab

[Images\(5\)](#)

Cat.#: DF6707	Concn.: ~1mg/ml	Mol.Wt.: 80kDa
Size:	Source: Rabbit	Clonality: Polyclonal
Application:	WB 1:500-1:2000, IHC 1:50-1:200, IF/ICC 1:100-1:500 *The optimal dilutions should be determined by the end user.	
Reactivity:	Human,Mouse,Rat	
Storage:	Rabbit IgG in phosphate buffered saline , pH 7.4, 150mM NaCl, 0.02% sodium azide and 50% glycerol. Store at -20 °C. Stable for 12 months from date of receipt.	
Purification:	The antiserum was purified by peptide affinity chromatography using SulfoLink™ Coupling Resin (Thermo Fisher Scientific).	
Immunogen:	A synthesized peptide derived from human POLI, corresponding to a region within N-terminal amino acids.	
Uniprot:	Q9UNA4	
Description:	Mammalian Pol γ owns an unusual combination of properties: it is stimulated by Mn^{2+} ions, can bypass some DNA lesions and misincorporates “G” opposite template “T” more frequently than incorporates the correct “A.” [PMID:21304950] It also was shown to possess dRP lyase activity. In addition, Pol γ is much more efficient in the presence of Mn^{2+} in comparison to Mg^{2+} . [PMID: 17609217]. It has been proposed that POLI involves in immunoglobulin somatic hypermutation (SHM), bypass of deaminated cytosines, several adducts of the purine bases. DNA strand crosslinks and is involved in DNA repair under oxidative stress. [PMID:15199127]	



Western blot analysis of MCF7 cell lysates, using POLI Ab. The lane on the left was treated with the antigen-specific peptide.



DF6707 at 1/100 staining Rat kidney tissue by IHC-P. The sample was formaldehyde fixed and a heat mediated antigen retrieval step in citrate buffer was performed. The sample was then blocked and incubated with the primary Ab at 4°C overnight. An HRP conjugated anti-Rabbit Ab was used as the secondary Ab.

IMPORTANT: For western blot, incubate membrane with diluted primary Ab in 5% w/v milk , 1X TBS, 0.1% Tween@20 at 4°C with gentle shaking, overnight.

For Research Use Only. Not for use in diagnostic and therapeutic procedures. Not for resale without express authorization.