

PSMD10 Ab

[Images\(3\)](#)

Cat.#: DF6713	Concn.: ~1mg/ml	Mol.Wt.: 24kDa
Size:	Source: Rabbit	Clonality: Polyclonal

Application: WB 1:500-1:2000, IHC 1:50-1:200
*The optimal dilutions should be determined by the end user.

Reactivity: Human, Mouse, Rat

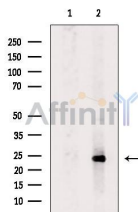
Storage: Rabbit IgG in phosphate buffered saline, pH 7.4, 150mM NaCl, 0.02% sodium azide and 50% glycerol. Store at -20 °C. Stable for 12 months from date of receipt.

Purification: The antiserum was purified by peptide affinity chromatography using SulfoLink™ Coupling Resin (Thermo Fisher Scientific).

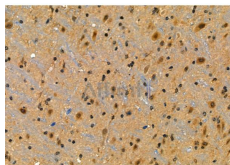
Immunogen: A synthesized peptide derived from human PSMD10, corresponding to a region within C-terminal amino acids.

Uniprot: O75832

Description: This gene encodes a subunit of the PA700/19S complex, which is the regulatory component of the 26S proteasome. The 26S proteasome complex is required for ubiquitin-dependent protein degradation. This protein is a non-ATPase subunit that may be involved in protein-protein interactions. Aberrant expression of this gene may play a role in tumorigenesis. Two transcripts encoding different isoforms have been described. Pseudogenes have been identified on chromosomes 3 and 20.[provided by RefSeq, Mar 2011]



Western blot analysis of extracts from MCF7 cells, using PSMD10 Ab. The lane on the left was treated with blocking peptide.



DF6713 at 1/100 staining Mouse brain tissue by IHC-P. The sample was formaldehyde fixed and a heat mediated antigen retrieval step in citrate buffer was performed. The sample was then blocked and incubated with the primary Ab at 4°C overnight. An HRP conjugated anti-Rabbit Ab was used as the secondary Ab.

IMPORTANT: For western blot, incubate membrane with diluted primary Ab in 5% w/v milk , 1X TBS, 0.1% Tween@20 at 4°C with gentle shaking, overnight.

For Research Use Only. Not for use in diagnostic and therapeutic procedures. Not for resale without express authorization.