

NME1 Ab

[Images\(1\)](#)

Cat.#: BF0222	Concn.: ~1mg/ml	Mol.Wt.: 17kDa
Size:	Source: Mouse	Clonality: Monoclonal

Application: ELISA 1:10000, WB 1:500-1:2000, IHC 1:200-1:1000, IF/ICC 1:200-1:1000, FCM 1:200-1:400

*The optimal dilutions should be determined by the end user.

Reactivity: Human

Storage: Mouse IgG1 in phosphate buffered saline (without Mg²⁺ and Ca²⁺), pH 7.4, 150mM NaCl, 0.02% sodium azide and 50% glycerol. Store at -20 °C. Stable for 12 months from date of receipt.

Purification: Affinity-chromatography.

Immunogen: Purified recombinant fragment of human NME1 expressed in E. Coli.

Uniprot: P15531

Description: non-metastatic cells 1,protein,with a nm23 nucleoside diphosphate kinase gene family,involved in the phosphorylation of nucleoside diphosphates,with a reduced expression in tumor progression to the metastatic phenotype,muted in aggressive neuroblastoma,expressed in lung carcinoma cell lines not in normal lung,pyrimidine biosynthetic pathway. Involved in cell proliferation, differentiation and development, signal transduction, G protein-coupled receptor endocytosis, and gene expression. Required for neural development including neural patterning and cell fate determination. Has tumor metastasis-suppressive capacity.Tissue specificity: Isoform 1 is expressed in heart, brain, placenta, lung, liver, skeletal muscle, pancreas, spleen and thymus.

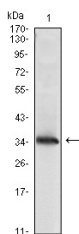


Figure 1: Western blot analysis using NME1 mAb against NME1(AA: 27-177)-hIgGFc transfected HEK293 cell lysate.

IMPORTANT: For western blot, incubate membrane with diluted primary Ab in 5% w/v milk, 1X TBS, 0.1% Tween@20 at 4°C with gentle shaking, overnight.