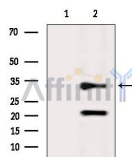


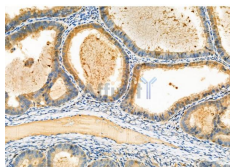
CAPZA2 Ab

[Images\(4\)](#)

Cat.#: DF6784	Concn.: ~1mg/ml	Mol.Wt.: 33kDa
Size:	Source: Rabbit	Clonality: Polyclonal
Application:	WB 1:500-1:2000, IHC 1:50-1:200 *The optimal dilutions should be determined by the end user.	
Reactivity:	Human,Mouse,Rat	
Storage:	Rabbit IgG in phosphate buffered saline , pH 7.4, 150mM NaCl, 0.02% sodium azide and 50% glycerol. Store at -20 °C. Stable for 12 months from date of receipt.	
Purification:	The antiserum was purified by peptide affinity chromatography using SulfoLink™ Coupling Resin (Thermo Fisher Scientific).	
Immunogen:	A synthesized peptide derived from human CAPZA2, corresponding to a region within the internal amino acids.	
Uniprot:	P47755	
Description:	The protein encoded by this gene is a member of the F-actin capping protein alpha subunit family. It is the alpha subunit of the barbed-end actin binding protein Cap Z. By capping the barbed end of actin filaments, Cap Z regulates the growth of the actin filaments at the barbed end. [provided by RefSeq, Jul 2008]	



Western blot analysis of extracts from HepG2 cells(heat-shock treatment), using CAPZA2 Ab. The lane on the left was treated with blocking peptide.



DF6784 at 1/100 staining Human ovarian cancer by IHC-P. The sample was formaldehyde fixed and a heat mediated antigen retrieval step in citrate buffer was performed. The sample was then blocked and incubated with the primary Ab at 4°C overnight. An HRP conjugated anti-Rabbit Ab was used as the secondary Ab.

IMPORTANT: For western blot, incubate membrane with diluted primary Ab in 5% w/v milk , 1X TBS, 0.1% Tween@20 at 4°C with gentle shaking,

overnight.

For Research Use Only. Not for use in diagnostic and therapeutic procedures. Not for resale without express authorization.