

MESP1 Ab

[Images\(1\)](#)

Cat.#: BF0442	Concn.: ~1mg/ml	Mol.Wt.: 28.5kDa
Size:	Source: Mouse	Clonality: Monoclonal

Application:	ELISA 1:10000, WB 1:500-1:2000 *The optimal dilutions should be determined by the end user.
Reactivity:	Human
Storage:	Mouse IgG1 in phosphate buffered saline (without Mg ²⁺ and Ca ²⁺), pH 7.4, 150mM NaCl, 0.02% sodium azide and 50% glycerol. Store at -20 °C. Stable for 12 months from date of receipt.
Purification:	Affinity-chromatography.
Immunogen:	Purified recombinant fragment of human MESP1 expressed in E. Coli.
Uniprot:	Q9BRJ9
Description:	Mesp1 (mesoderm posterior 1) is a basic helix-loop-helix-type transcription factor, which along with its related proteins, has an essential role in both segmentation and rostro-caudal patterning of somites in the anterior pre-somitic mesoderm. Mesp1 is expressed in many of the precursors of the cardiovascular system and is known to play a role in the process of cardiac morphogenesis.

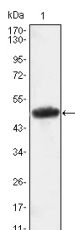


Figure 1: Western blot analysis using MESP1 mAb against MESP1(AA: 1-200)-hIgGFc transfected HEK293 cell lysate.

IMPORTANT: For western blot, incubate membrane with diluted primary Ab in 5% w/v milk, 1X TBS, 0.1% Tween@20 at 4°C with gentle shaking, overnight.

For Research Use Only. Not for use in diagnostic and therapeutic procedures. Not for resale without express authorization.