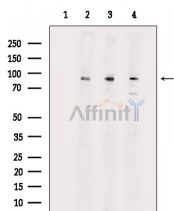


beta Catenin Ab

[References\(2\)](#) [Images\(6\)](#)

Cat.#: DF6794	Concn.: ~1mg/ml	Mol.Wt.: 85~95kD
Size:	Source: Rabbit	Clonality: Polyclonal
Application:	WB 1:500-1:2000, IHC 1:50-1:200, IF/ICC 1:100-1:500 *The optimal dilutions should be determined by the end user.	
Reactivity:	Human, Mouse, Rat	
Storage:	Rabbit IgG in phosphate buffered saline, pH 7.4, 150mM NaCl, 0.02% sodium azide and 50% glycerol. Store at -20 °C. Stable for 12 months from date of receipt.	
Purification:	The antiserum was purified by peptide affinity chromatography using SulfoLink™ Coupling Resin (Thermo Fisher Scientific).	
Immunogen:	A synthesized peptide derived from human beta Catenin, corresponding to a region within C-terminal amino acids.	
Uniprot:	P35222	
Description:	<p>β-Catenin is a key downstream effector in the Wnt signaling pathway. It is implicated in two major biological processes in vertebrates: early embryonic development and tumorigenesis. CK1 phosphorylates β-catenin at Ser45. This phosphorylation event primes β-catenin for subsequent phosphorylation by GSK-3β (4-6). GSK-3β destabilizes β-catenin by phosphorylating it at Ser33, Ser37, and Thr41. Mutations at these sites result in the stabilization of β-catenin protein levels and have been found in many tumor cell lines.</p>	



Western blot analysis of extracts from various samples, using beta Catenin Ab.

Lane 1: Rat brain, blocked with antigen-specific peptides,

Lane 2: Rat brain,

Lane 3: Rat kidney,

Lane 4: Mouse brain.

IMPORTANT: For western blot, incubate membrane with diluted primary Ab in 5% w/v milk, 1X TBS, 0.1% Tween@20 at 4°C with gentle shaking, overnight.

For Research Use Only. Not for use in diagnostic and therapeutic procedures. Not for resale without express authorization.