

GNA15 Ab

[Images\(4\)](#)

Cat.#: DF6805	Concn.: ~1mg/ml	Mol.Wt.: 44kDa, 55 kDa
Size:	Source: Rabbit	Clonality: Polyclonal

Application: WB 1:500-1:2000, IHC 1:50-1:200
*The optimal dilutions should be determined by the end user.

Reactivity: Human, Mouse, Rat

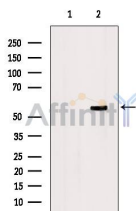
Storage: Rabbit IgG in phosphate buffered saline, pH 7.4, 150mM NaCl, 0.02% sodium azide and 50% glycerol. Store at -20 °C. Stable for 12 months from date of receipt.

Purification: The antiserum was purified by peptide affinity chromatography using SulfoLink™ Coupling Resin (Thermo Fisher Scientific).

Immunogen: A synthesized peptide derived from human GNA15, corresponding to a region within C-terminal amino acids.

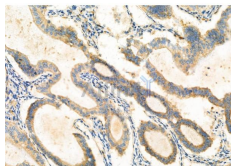
Uniprot: P30679

Description: Heterotrimeric G proteins function to relay information from cell surface receptors to intracellular effectors. Each of a very broad range of receptors specifically detects an extracellular stimulus (a photon, pheromone, odorant, hormone or neurotransmitter) while the effectors (i.e., adenylyl cyclase), which act to generate one or more intracellular messengers, are less numerous. In mammals, G protein, α and polypeptides are encoded by at least 16, 4 and 7 genes, respectively (2-5). Most interest in G proteins has been focused on their α subunits, since these proteins bind and hydrolyze GTP and most obviously regulate the activity of the best studied effectors. Four distinct classes of G subunits have been identified; these include Gs, Gi, Gq and Ga 12/13 (3,4).



Western blot analysis of extracts from B16F10, using GNA15 Ab. The lane on the left was treated with blocking peptide.

Observed bands: 55 kDa.



DF6805 at 1/100 staining human ovarian cancer by IHC-P. The sample was formaldehyde fixed and a heat mediated antigen retrieval step in citrate buffer was performed. The sample was then blocked and incubated with the primary Ab at 4°C overnight. An HRP conjugated anti-Rabbit Ab was used as the secondary Ab.

IMPORTANT: For western blot, incubate membrane with diluted primary Ab in 5% w/v milk , 1X TBS, 0.1% Tween@20 at 4°C with gentle shaking, overnight.

For Research Use Only. Not for use in diagnostic and therapeutic procedures. Not for resale without express authorization.