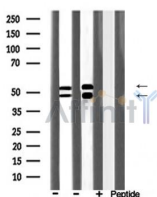


## GSK3 alpha/ beta Ab

[Images\(1\)](#)

Cat.#: DF6806	Concn.: ~1mg/ml	Mol.Wt.: 48kDa
Size:	Source: Rabbit	Clonality: Polyclonal
Application:	WB 1:500-1:2000, IHC 1:50-1:200 *The optimal dilutions should be determined by the end user.	
Reactivity:	Human, Mouse, Rat	
Storage:	Rabbit IgG in phosphate buffered saline, pH 7.4, 150mM NaCl, 0.02% sodium azide and 50% glycerol. Store at -20 °C. Stable for 12 months from date of receipt.	
Purification:	The antiserum was purified by peptide affinity chromatography using SulfoLink™ Coupling Resin (Thermo Fisher Scientific).	
Immunogen:	A synthesized peptide derived from human GSK3 alpha/ beta, corresponding to a region within N-terminal amino acids.	
Uniprot:	P49841	
Description:	Glycogen synthase kinase-3 (GSK-3) was initially identified as an enzyme that regulates glycogen synthesis in response to insulin. GSK-3 is a ubiquitously expressed serine/threonine protein kinase that phosphorylates and inactivates glycogen synthase. GSK-3 is a critical downstream element of the PI3K/Akt cell survival pathway whose activity can be inhibited by Akt-mediated phosphorylation at Ser21 of GSK-3 $\alpha$ and Ser9 of GSK-3 $\beta$ (2,3). GSK-3 has been implicated in the regulation of cell fate in Dictyostelium and is a component of the Wnt signaling pathway required for Drosophila, Xenopus, and mammalian development. GSK-3 has been shown to regulate cyclin D1 proteolysis and subcellular localization.	



Western blot analysis of extracts from various samples, using GSK3A/B Ab.

Lane 1: Mouse heart lysates;

Lane 2: Mouse brain lysates;

Lane 3: Mouse brain lysates treated with blocking peptide;

**IMPORTANT:** For western blot, incubate membrane with diluted primary Ab in 5% w/v milk, 1X TBS, 0.1% Tween@20 at 4°C with gentle shaking, overnight.

For Research Use Only. Not for use in diagnostic and therapeutic procedures. Not for resale without express authorization.