

KLHL12 Ab

[Images\(1\)](#)

| | | |
|---------------|-----------------|-----------------------|
| Cat.#: BF0473 | Concn.: ~1mg/ml | Mol.Wt.: 63kDa |
| Size: | Source: Mouse | Clonality: Monoclonal |

| | |
|---------------|---|
| Application: | ELISA 1:10000, WB 1:500-1:2000 *The optimal dilutions should be determined by the end user. |
| Reactivity: | Human |
| Storage: | Mouse IgG1 in phosphate buffered saline (without Mg ²⁺ and Ca ²⁺), pH 7.4, 150mM NaCl, 0.02% sodium azide and 50% glycerol. Store at -20 °C. Stable for 12 months from date of receipt. |
| Purification: | Affinity-chromatography. |
| Immunogen: | Purified recombinant fragment of human KLHL12 expressed in E. Coli. |
| Uniprot: | Q53G59 |
| Description: | Serves as a substrate-specific adapter for the CUL3-based ubiquitin-protein E3 ligase complex. Negatively regulates the Wnt signaling pathway via the targeted ubiquitination and subsequent proteolysis of DVL3. Tissue specificity: Highly expressed in testis and at lower levels in the submandibular salivary gland. |

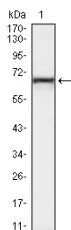


Figure 1: Western blot analysis using KLHL12 mouse mAb against Hela (1) cell lysate.

IMPORTANT: For western blot, incubate membrane with diluted primary Ab in 5% w/v milk, 1X TBS, 0.1% Tween@20 at 4°C with gentle shaking, overnight.

For Research Use Only. Not for use in diagnostic and therapeutic procedures. Not for resale without express authorization.