

LCN2 Ab

[References\(29\)](#) [Images\(21\)](#)

Cat.#: DF6816 Concn.: ~1mg/ml Mol.Wt.: 23kDa
Size: Source: Rabbit Clonality: Polyclonal

Application: WB 1:500-1:2000, IHC 1:50-1:200
*The optimal dilutions should be determined by the end user.

Reactivity: Human,Mouse,Rat

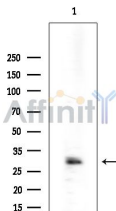
Storage: Rabbit IgG in phosphate buffered saline , pH 7.4, 150mM NaCl, 0.02% sodium azide and 50% glycerol. Store at -20 °C. Stable for 12 months from date of receipt.

Purification: The antiserum was purified by peptide affinity chromatography using SulfoLink™ Coupling Resin (Thermo Fisher Scientific).

Immunogen: A synthesized peptide derived from human LCN2, corresponding to a region within the internal amino acids.

Uniprot: P80188

Description: Lipocalin-2, a member of the lipocalin family of proteins, was originally identified as a gelatinase-associated component of neutrophil secretory granules . Lipocalin-2 is involved in innate immunity, iron homeostasis, and apoptosis. Lipocalin-2 limits bacterial growth by binding to bacterial siderophores and sequestering iron (2-4). In mammalian cells, iron-loaded lipocalin-2 binds to its receptor, 24p3R, and is internalized, thereby releasing iron and increasing the intracellular iron concentration . Conversely, iron-free lipocalin-2 promotes apoptosis . Lipocalin-2 is also expressed in adipose tissue and promotes insulin resistance in cultured mouse adipocytes .



Western blot analysis of extracts from COLO205 cells(heat-shock treatment), using LCN2 Ab at 1/1000 dilution.
Observed bands:30kD.

IMPORTANT: For western blot, incubate membrane with diluted primary Ab in 5% w/v milk , 1X TBS, 0.1% Tween@20 at 4°C with gentle shaking, overnight.

For Research Use Only. Not for use in diagnostic and therapeutic procedures. Not for resale without express authorization.