

## TYK2 Ab

[Images\(3\)](#)

Cat.#: DF6851	Concn.: ~1mg/ml	Mol.Wt.: 134kDa
Size:	Source: Rabbit	Clonality: Polyclonal

**Application:** WB 1:500-1:2000, IHC 1:50-1:200, IF/ICC 1:100-1:500  
\*The optimal dilutions should be determined by the end user.

**Reactivity:** Human,Mouse,Rat

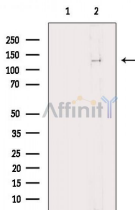
**Storage:** Rabbit IgG in phosphate buffered saline , pH 7.4, 150mM NaCl, 0.02% sodium azide and 50% glycerol. Store at -20 °C. Stable for 12 months from date of receipt.

**Purification:** The antiserum was purified by peptide affinity chromatography using SulfoLink™ Coupling Resin (Thermo Fisher Scientific).

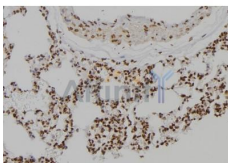
**Immunogen:** A synthesized peptide derived from human TYK2, corresponding to a region within C-terminal amino acids.

**Uniprot:** P29597

**Description:** Tyk2, a member of the Jak family of protein tyrosine kinases, associates with and is activated by receptors for many cytokines including IL-13, the IL-6 family, IL-10, and interferon-alpha and beta (1-3). Following ligand binding, Tyk2 is activated by phosphorylation on Tyr1054 and/or Tyr1055 . Tyk2 is required for the tyrosine phosphorylation of Stat3 in the IFN-beta signaling cascade .



Western blot analysis of extracts from A549 cells, using TYK2 Ab. The lane on the left was treated with blocking peptide.



DF6851 at 1/100 staining Rat lung tissue by IHC-P. The sample was formaldehyde fixed and a heat mediated antigen retrieval step in citrate buffer was performed. The sample was then blocked and incubated with the Ab for 1.5 hours at 22°C. An HRP conjugated goat anti-rabbit Ab was used as the secondary Ab.

---

in 5% w/v milk , 1X TBS, 0.1% Tween@20 at 4°C with gentle shaking,  
overnight.

---

For Research Use Only. Not for use in diagnostic and therapeutic  
procedures. Not for resale without express authorization.