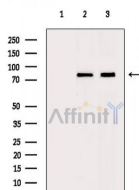


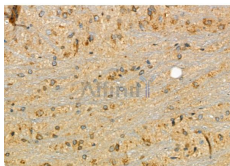
## Zyxin Ab

[Images\(7\)](#)

Cat.#: DF6858	Concn.: ~1mg/ml	Mol.Wt.: 80kDa,70kDa
Size:	Source: Rabbit	Clonality: Polyclonal
Application:	WB 1:500-1:2000, IHC 1:50-1:200, IF/ICC 1:100-1:500 *The optimal dilutions should be determined by the end user.	
Reactivity:	Human, Mouse, Rat	
Storage:	Rabbit IgG in phosphate buffered saline, pH 7.4, 150mM NaCl, 0.02% sodium azide and 50% glycerol. Store at -20 °C. Stable for 12 months from date of receipt.	
Purification:	The antiserum was purified by peptide affinity chromatography using SulfoLink™ Coupling Resin (Thermo Fisher Scientific).	
Immunogen:	A synthesized peptide derived from human Zyxin, corresponding to a region within the internal amino acids.	
Uniprot:	Q15942	
Description:	The zyxin family of proteins includes LIMD1, ajuba, trip6 and zyxin, each of which contains three LIM domains at the carboxy-terminus. Zyxin family members associate with the actin cytoskeleton and are components of both the cell-cell junction adhesive complex and the integrin-mediated adhesive complex. They shuttle in and out of the nucleus where they may function in transcriptional activation. Zyxin is involved in the regulation of mechanical force-induced actin polymerization at focal adhesions, and in regulation of adhesion and migration, possibly through recruitment of Ena/VASP proteins to focal adhesions. Zyxin interacts with and may regulate the function of the tumor suppressor myopodin, which inhibits tumor growth and metastasis.	



Western blot analysis of extracts from various samples, using Zyxin Ab.  
Lane 1: Rat heart, blocked with antigen-specific peptides,  
Lane 2: Rat heart,  
Lane 3: RAW264.7 cells(heat-shock treatment).



DF6858 at 1/100 staining Rat brain tissue by IHC-P. The sample was formaldehyde fixed and a heat mediated antigen retrieval step in citrate buffer was performed. The sample was then blocked and incubated with the primary Ab at 4°C overnight. An HRP conjugated anti-Rabbit Ab was used as the secondary Ab.

**IMPORTANT:** For western blot, incubate membrane with diluted primary Ab in 5% w/v milk , 1X TBS, 0.1% Tween@20 at 4°C with gentle shaking, overnight.

For Research Use Only. Not for use in diagnostic and therapeutic procedures. Not for resale without express authorization.