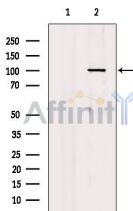


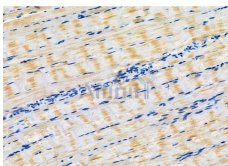
## PIWL1 Ab

[Images\(5\)](#)

Cat.#: DF6873	Concn.: ~1mg/ml	Mol.Wt.: 99kDa
Size:	Source: Rabbit	Clonality: Polyclonal
Application:	WB 1:500-1:2000, IHC 1:50-1:200, IF/ICC 1:20-1:100, IP 1:20-1:100, IHC 1:50-1:200 *The optimal dilutions should be determined by the end user.	
Reactivity:	Human,Mouse,Rat	
Storage:	Rabbit IgG in phosphate buffered saline , pH 7.4, 150mM NaCl, 0.02% sodium azide and 50% glycerol. Store at -20 °C. Stable for 12 months from date of receipt.	
Purification:	The antiserum was purified by peptide affinity chromatography using SulfoLink™ Coupling Resin (Thermo Fisher Scientific).	
Immunogen:	A synthesized peptide derived from human PIWL1, corresponding to a region within the internal amino acids.	
Uniprot:	Q96J94	
Description:	The <i>Drosophila piwi</i> gene was identified as being required for the self-renewal of germline stem cells . Piwi homologs are well conserved among various species including Arabidopsis, C. elegans, and Homo sapiens . Both Miwi and Mili proteins are mouse homologs of Piwi and contain a C-terminal Piwi domain . Miwi and Mili bind to Piwi-interacting RNAs (piRNAs) in male germ cells and are essential for spermatogenesis in mice (3-5).	



Western blot analysis of extracts from Rat brain, using MIWI Ab. The lane on the left was treated with blocking peptide.



DF6873 at 1/100 staining Rat muscle tissue by IHC-P. The sample was formaldehyde fixed and a heat mediated antigen retrieval step in citrate buffer was performed. The sample was then blocked and incubated with the primary Ab at 4°C overnight. An HRP conjugated anti-Rabbit Ab was used as the secondary Ab.

**IMPORTANT:** For western blot, incubate membrane with diluted primary Ab in 5% w/v milk , 1X TBS, 0.1% Tween@20 at 4°C with gentle shaking, overnight.

For Research Use Only. Not for use in diagnostic and therapeutic procedures. Not for resale without express authorization.