

## ITGB2/CD18 Ab

[References\(3\)](#) [Images\(4\)](#)

Cat.#: DF6896  
Size:

Concn.: ~1mg/ml  
Source: Rabbit

Mol.Wt.: 85kDa  
Clonality: Polyclonal

Application:

WB 1:500-1:2000, IHC 1:50-1:200  
\*The optimal dilutions should be determined by the end user.

Reactivity:

Human,Mouse,Rat

Storage:

Rabbit IgG in phosphate buffered saline , pH 7.4, 150mM NaCl, 0.02% sodium azide and 50% glycerol. Store at -20 °C. Stable for 12 months from date of receipt.

Purification:

The antiserum was purified by peptide affinity chromatography using SulfoLink™ Coupling Resin (Thermo Fisher Scientific).

Immunogen:

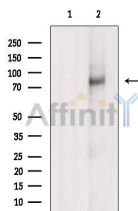
A synthesized peptide derived from human ITGB2/CD18, corresponding to a region within N-terminal amino acids.

Uniprot:

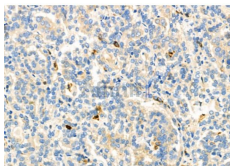
P05107

Description:

In the immune system, integrins have essential roles in leukocyte trafficking and function. These include immune cell attachment to endothelial and antigen-presenting cells, cytotoxicity, and extravasation into tissues . Integrin adhesion receptors transduce signals that control complex cell functions which require the regulation of gene expression, such as proliferation, differentiation and survival. Their intracellular domain has no catalytic function, indicating that interaction with other transducing molecules is crucial for integrin-mediated signaling. JAB1 (Jun activation domain-binding protein 1), a coactivator of the c-Jun transcription factor, has been identified as a protein that interacts with the cytoplasmic domain of the beta2 subunit of the alphaL/beta2 integrin LFA-1 .



Western blot analysis of extracts from Mouse brain, using ITGB2 Ab. The lane on the left was treated with blocking peptide.



DF6896 at 1/100 staining Human kidney cancer by IHC-P. The sample was formaldehyde fixed and a heat mediated antigen retrieval step in citrate buffer was performed. The sample was then blocked and incubated with the primary Ab at 4°C overnight. An HRP conjugated anti-Rabbit Ab was used as the secondary Ab.

**IMPORTANT:** For western blot, incubate membrane with diluted primary Ab in 5% w/v milk , 1X TBS, 0.1% Tween@20 at 4°C with gentle shaking, overnight.

For Research Use Only. Not for use in diagnostic and therapeutic procedures. Not for resale without express authorization.