

UHRF1 Ab

[References\(1\)](#) [Images\(3\)](#)

Cat.#: DF6929	Concn.: ~1mg/ml	Mol.Wt.: 91kDa
Size:	Source: Rabbit	Clonality: Polyclonal

Application: WB 1:500-1:2000, IHC 1:50-1:200, ChIP, IF/ICC 1:100-1:500

*The optimal dilutions should be determined by the end user.

Reactivity: Human, Mouse, Rat

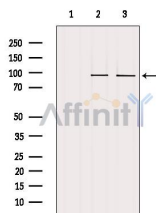
Storage: Rabbit IgG in phosphate buffered saline, pH 7.4, 150mM NaCl, 0.02% sodium azide and 50% glycerol. Store at -20 °C. Stable for 12 months from date of receipt.

Purification: The antiserum was purified by peptide affinity chromatography using SulfoLink™ Coupling Resin (Thermo Fisher Scientific).

Immunogen: A synthesized peptide derived from human UHRF1, corresponding to a region within N-terminal amino acids.

Uniprot: Q96T88

Description: UHRF1, also named as ICBP90, NP95 and RNF106, is a putative E3 ubiquitin-protein ligase. It may participate in methylation-dependent transcriptional regulation. UHRF1 binds to inverted 5'-CCAAT-3' box 2 in the TOP2A promoter, and activates TOP2A expression. It is important for G1/S transition and may be involved in DNA repair and chromosomal stability. UHRF1's ability to repress its direct target gene expression is dependent on PHD(UHRF1) binding to unmodified H3R2.

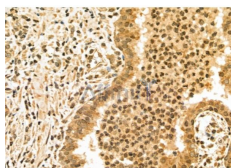


Western blot analysis of extracts from various samples, using UHRF1 Ab.

Lane 1: PC12 treated with blocking peptide;

Lane 2: PC12;

Lane 3: 293.



DF6929 at 1/100 staining Human prostate cancer by IHC-P. The sample was formaldehyde fixed and a heat mediated antigen retrieval step in citrate buffer was performed. The sample was then blocked and incubated with the primary Ab at 4°C overnight. An HRP conjugated anti-Rabbit Ab was used as the secondary Ab.

IMPORTANT: For western blot, incubate membrane with diluted primary Ab in 5% w/v milk , 1X TBS, 0.1% Tween@20 at 4°C with gentle shaking, overnight.

For Research Use Only. Not for use in diagnostic and therapeutic procedures. Not for resale without express authorization.