

## GEF H1 Ab

[Images\(1\)](#)

Cat.#: DF6996	Concn.: ~1mg/ml	Mol.Wt.: 111kDa
Size:	Source: Rabbit	Clonality: Polyclonal

Application: WB 1:500-1:2000, IHC 1:50-1:200, IF/ICC 1:100-1:500  
\*The optimal dilutions should be determined by the end user.

Reactivity: Human, Mouse, Rat

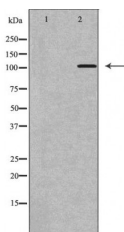
Storage: Rabbit IgG in phosphate buffered saline, pH 7.4, 150mM NaCl, 0.02% sodium azide and 50% glycerol. Store at -20 °C. Stable for 12 months from date of receipt.

Purification: The antiserum was purified by peptide affinity chromatography using SulfoLink™ Coupling Resin (Thermo Fisher Scientific).

Immunogen: A synthesized peptide derived from human GEF H1, corresponding to a region within C-terminal amino acids.

Uniprot: Q92974

Description: Rho GTPases play a fundamental role in numerous cellular processes that are initiated by extracellular stimuli that work through G protein coupled receptors. The encoded protein may form complex with G proteins and stimulate rho-dependent signals. Alternatively spliced transcript variants encoding different isoforms have been identified.



Western blot analysis of HeLa whole cell lysates, using ARHGEF2 Ab. The lane on the left was treated with the antigen-specific peptide.

**IMPORTANT:** For western blot, incubate membrane with diluted primary Ab in 5% w/v milk, 1X TBS, 0.1% Tween@20 at 4°C with gentle shaking, overnight.

For Research Use Only. Not for use in diagnostic and therapeutic procedures. Not for resale without express authorization.