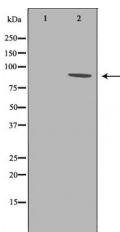


## Integrin beta3 Ab

[Images\(1\)](#)

|               |  |                       |
|---------------|--|-----------------------|
| Cat.#: DF6999 | Concn.: ~1mg/ml  | Mol.Wt.: 87kDa        |
| Size:         | Source: Rabbit   | Clonality: Polyclonal |
| Application:  | WB 1:500-1:2000, IHC 1:50-1:200, IF/ICC 1:100-1:500<br>*The optimal dilutions should be determined by the end user.  |                       |
| Reactivity:   | Human, Mouse, Rat  |                       |
| Storage:      | Rabbit IgG in phosphate buffered saline, pH 7.4, 150mM NaCl, 0.02% sodium azide and 50% glycerol. Store at -20 °C. Stable for 12 months from date of receipt.  |                       |
| Purification: | The antiserum was purified by peptide affinity chromatography using SulfoLink™ Coupling Resin (Thermo Fisher Scientific).  |                       |
| Immunogen:    | A synthesized peptide derived from human Integrin beta3, corresponding to a region within C-terminal amino acids.  |                       |
| Uniprot:      | P05106   |                       |
| Description:  | The ITGB3 protein product is the integrin beta chain beta 3. Integrins are integral cell-surface proteins composed of an alpha chain and a beta chain. A given chain may combine with multiple partners resulting in different integrins. Integrin beta 3 is found along with the alpha IIb chain in platelets. Integrins are known to participate in cell adhesion as well as cell-surface mediated signalling. |                       |



Western blot analysis of extracts from Mouse spleen, using ITGB3 Ab. The lane on the left was treated with the antigen-specific peptide.

**IMPORTANT:** For western blot, incubate membrane with diluted primary Ab in 5% w/v milk, 1X TBS, 0.1% Tween@20 at 4°C with gentle shaking, overnight.

For Research Use Only. Not for use in diagnostic and therapeutic procedures. Not for resale without express authorization.