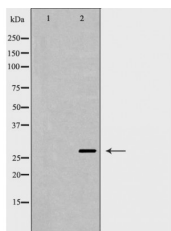


AQP0 Ab

[Images\(1\)](#)

Cat.#: DF7094	Concn.: ~1mg/ml	Mol.Wt.: 28kDa
Size:	Source: Rabbit	Clonality: Polyclonal
Application:	WB 1:500-1:1000 *The optimal dilutions should be determined by the end user.	
Reactivity:	Human,Mouse,Rat	
Storage:	Rabbit IgG in phosphate buffered saline , pH 7.4, 150mM NaCl, 0.02% sodium azide and 50% glycerol. Store at -20 °C. Stable for 12 months from date of receipt.	
Purification:	The antiserum was purified by peptide affinity chromatography using SulfoLink™ Coupling Resin (Thermo Fisher Scientific).	
Immunogen:	A synthesized peptide derived from human AQP0, corresponding to a region within the internal amino acids.	
Uniprot:	P30301	
Description:	Major intrinsic protein is a member of the water-transporting aquaporins as well as the original member of the MIP family of channel proteins. The function of the fiber cell membrane protein encoded by this gene is undetermined, yet this protein is speculated to play a role in intracellular communication. The MIP protein is expressed in the ocular lens and is required for correct lens function. This gene has been mapped among aquaporins AQP2, AQP5, and AQP6, in a potential gene cluster at 12q13.	



Western blot analysis of extracts from mouse eyes tissue lysates, using AQP0 Ab. The lane on the left was treated with the antigen-specific peptide.

IMPORTANT: For western blot, incubate membrane with diluted primary Ab in 5% w/v milk , 1X TBS, 0.1% Tween@20 at 4°C with gentle shaking, overnight.

For Research Use Only. Not for use in diagnostic and therapeutic procedures. Not for resale without express authorization.