

## KISS1R Ab

[References\(5\)](#) [Images\(22\)](#)

Cat.#: DF7123  
Size:

Concn.: ~1mg/ml  
Source: Rabbit

Mol.Wt.: 43kDa  
Clonality: Polyclonal

Application:

WB 1:500-1:1000, IHC 1:50-1:100, IF/ICC 1:100-1:500

\*The optimal dilutions should be determined by the end user.

Reactivity:

Human,Mouse,Rat

Storage:

Rabbit IgG in phosphate buffered saline , pH 7.4, 150mM NaCl, 0.02% sodium azide and 50% glycerol. Store at -20 °C. Stable for 12 months from date of receipt.

Purification:

The antiserum was purified by peptide affinity chromatography using SulfoLink™ Coupling Resin (Thermo Fisher Scientific).

Immunogen:

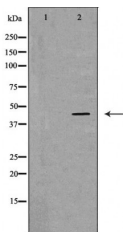
A synthesized peptide derived from human KISS1R, corresponding to a region within C-terminal amino acids.

Uniprot:

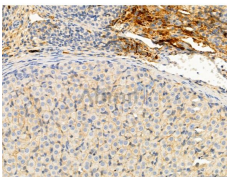
Q969F8

Description:

The protein encoded by this gene is a galanin-like G protein-coupled receptor that binds metastatin, a peptide encoded by the metastasis suppressor gene KISS1. The tissue distribution of the expressed gene suggests that it is involved in the regulation of endocrine function, and this is supported by the finding that this gene appears to play a role in the onset of puberty. Mutations in this gene have been associated with hypogonadotropic hypogonadism and central precocious puberty.



Western blot analysis of extracts from HeLa , using KISS1R Ab. The lane on the left was treated with the antigen-specific peptide.



DF7123 at 1/100 staining Rat ovary tissue by IHC-P. The sample was formaldehyde fixed and a heat mediated antigen retrieval step in citrate buffer was performed. The sample was then blocked and incubated with the primary Ab at 4°C overnight. An HRP conjugated anti-Rabbit Ab was used as the secondary Ab.

**IMPORTANT:** For western blot, incubate membrane with diluted primary Ab in 5% w/v milk , 1X TBS, 0.1% Tween@20 at 4°C with gentle shaking, overnight.

For Research Use Only. Not for use in diagnostic and therapeutic procedures. Not for resale without express authorization.