

KLK2 Ab

[Images\(8\)](#)

Cat.#: DF7136	Concn.: ~1mg/ml	Mol.Wt.: 29kDa
Size:	Source: Rabbit	Clonality: Polyclonal

Application: WB 1:500-1:2000, IHC 1:100-1:200

*The optimal dilutions should be determined by the end user.

Reactivity: Human,Mouse,Rat

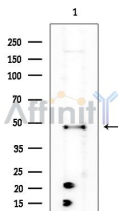
Storage: Rabbit IgG in phosphate buffered saline , pH 7.4, 150mM NaCl, 0.02% sodium azide and 50% glycerol. Store at -20 °C. Stable for 12 months from date of receipt.

Purification: The antiserum was purified by peptide affinity chromatography using SulfoLink™ Coupling Resin (Thermo Fisher Scientific).

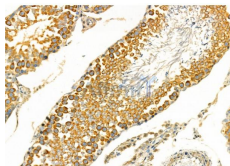
Immunogen: A synthesized peptide derived from human KLK2, corresponding to a region within the internal amino acids.

Uniprot: P20151

Description: This gene encodes a member of the grandular kallikrein protein family. Kallikreins are a subgroup of serine proteases that are clustered on chromosome 19. Members of this family are involved in a diverse array of biological functions. The protein encoded by this gene is a highly active trypsin-like serine protease that selectively cleaves at arginine residues. This protein is primarily expressed in prostatic tissue and is responsible for cleaving pro-prostate-specific antigen into its enzymatically active form. This gene is highly expressed in prostate tumor cells and may be a prognostic maker for prostate cancer risk. Alternate splicing results in both coding and non-coding transcript variants.



Western blot analysis of extracts from COLO205 cells(heat-shock treatment), using KLK2 Ab at 1/1000 dilution.
Observed bands:48kD.



DF7136 at 1/100 staining Rat testis tissue by IHC-P. The sample was formaldehyde fixed and a heat mediated antigen retrieval step in citrate buffer was performed. The sample was then blocked and incubated with the primary Ab at 4°C overnight. An HRP conjugated anti-Rabbit Ab was used as the secondary Ab.

IMPORTANT: For western blot, incubate membrane with diluted primary Ab in 5% w/v milk , 1X TBS, 0.1% Tween@20 at 4°C with gentle shaking, overnight.

For Research Use Only. Not for use in diagnostic and therapeutic procedures. Not for resale without express authorization.