

## Prealbumin Ab

[Images\(1\)](#)

Cat.#: DF7239	Concn.: ~1mg/ml	Mol.Wt.: 16kDa
Size:	Source: Rabbit	Clonality: Polyclonal

**Application:** WB 1:500-1:1000, IHC 1:50-1:200  
\*The optimal dilutions should be determined by the end user.

**Reactivity:** Human, Mouse, Rat

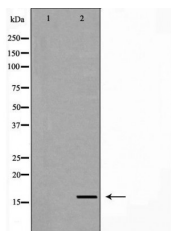
**Storage:** Rabbit IgG in phosphate buffered saline, pH 7.4, 150mM NaCl, 0.02% sodium azide and 50% glycerol. Store at -20 °C. Stable for 12 months from date of receipt.

**Purification:** The antiserum was purified by peptide affinity chromatography using SulfoLink™ Coupling Resin (Thermo Fisher Scientific).

**Immunogen:** A synthesized peptide derived from human Prealbumin, corresponding to a region within C-terminal amino acids.

**Uniprot:** P02766

**Description:** This gene encodes transthyretin, one of the three prealbumins including alpha-1-antitrypsin, transthyretin and orosomucoid. Transthyretin is a carrier protein; it transports thyroid hormones in the plasma and cerebrospinal fluid, and also transports retinol (vitamin A) in the plasma. The protein consists of a tetramer of identical subunits. More than 80 different mutations in this gene have been reported; most mutations are related to amyloid deposition, affecting predominantly peripheral nerve and/or the heart, and a small portion of the gene mutations is non-amyloidogenic.



Western blot analysis of extracts from mouse serum, using TTR Ab. The lane on the left was treated with the antigen-specific peptide.

**IMPORTANT:** For western blot, incubate membrane with diluted primary Ab in 5% w/v milk, 1X TBS, 0.1% Tween@20 at 4°C with gentle shaking, overnight.

For Research Use Only. Not for use in diagnostic and therapeutic procedures. Not for resale without express authorization.