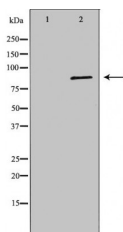


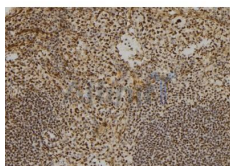
Cullin 2 Ab

[Images\(2\)](#)

Cat.#: DF7265	Concn.: ~1mg/ml	Mol.Wt.: 87kDa
Size:	Source: Rabbit	Clonality: Polyclonal
Application:	WB 1:500-1:2000, IHC 1:50-1:200, IF/ICC 1:100-1:500 *The optimal dilutions should be determined by the end user.	
Reactivity:	Human, Mouse, Rat	
Storage:	Rabbit IgG in phosphate buffered saline, pH 7.4, 150mM NaCl, 0.02% sodium azide and 50% glycerol. Store at -20 °C. Stable for 12 months from date of receipt.	
Purification:	The antiserum was purified by peptide affinity chromatography using SulfoLink™ Coupling Resin (Thermo Fisher Scientific).	
Immunogen:	A synthesized peptide derived from human Cullin 2, corresponding to a region within C-terminal amino acids.	
Uniprot:	Q13617	
Description:	CUL2 is a core component of multiple cullin-RING-based ECS (ElonginB/C-CUL2/5-SOCS-box protein) E3 ubiquitin-protein ligase complexes, which mediate the ubiquitination of target proteins. It serves as a rigid scaffold in the complex and may contribute to catalysis through positioning of the substrate and the ubiquitin-conjugating enzyme.	



Western blot analysis of NIH-3T3 cell lysates, using CUL2 Ab. The lane on the left was treated with the antigen-specific peptide.



DF7265 at 1/100 staining Mouse spleen tissue by IHC-P. The sample was formaldehyde fixed and a heat mediated antigen retrieval step in citrate buffer was performed. The sample was then blocked and incubated with the Ab for 1.5 hours at 22°C. An HRP conjugated goat anti-rabbit Ab was used as the secondary Ab.

IMPORTANT: For western blot, incubate membrane with diluted primary Ab in 5% w/v milk, 1X TBS, 0.1% Tween@20 at 4°C with gentle shaking,

overnight.

For Research Use Only. Not for use in diagnostic and therapeutic procedures. Not for resale without express authorization.