

SNAI1 Ab

[Images\(2\)](#)

Cat.#: BF0595	Concn.: ~1mg/ml	Mol.Wt.: 29kDa
Size:	Source: Mouse	Clonality: Monoclonal

Application:	ELISA 1:10000, WB 1:500-1:2000 *The optimal dilutions should be determined by the end user.
Reactivity:	Human
Storage:	Mouse IgG1 in phosphate buffered saline (without Mg ²⁺ and Ca ²⁺), pH 7.4, 150mM NaCl, 0.02% sodium azide and 50% glycerol. Store at -20 °C. Stable for 12 months from date of receipt.
Purification:	Affinity-chromatography.
Immunogen:	Purified recombinant fragment of human SNAI1 expressed in E. Coli.
Uniprot:	O95863
Description:	This protein has many roles during postimplantation development. It is involved in embryonic mesoderm formation and its maintenance and may also be involved in chondrogenesis and in epithelial-mesenchymal inductive interactions.

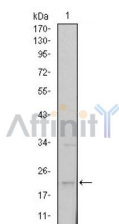


Figure 2: Western blot analysis using SNAI1 mouse mAb against NTERA-2 cell lysate.

IMPORTANT: For western blot, incubate membrane with diluted primary Ab in 5% w/v milk , 1X TBS, 0.1% Tween@20 at 4°C with gentle shaking, overnight.

For Research Use Only. Not for use in diagnostic and therapeutic procedures. Not for resale without express authorization.