

Glutamine Synthetase Ab

[Images\(1\)](#)

Cat.#: DF7341	Concn.: ~1mg/ml	Mol.Wt.: 42kDa
Size:	Source: Rabbit	Clonality: Polyclonal

Application: WB 1:500-1:2000, IHC 1:50-1:200, IF/ICC 1:100-1:500
*The optimal dilutions should be determined by the end user.

Reactivity: Human, Mouse, Rat

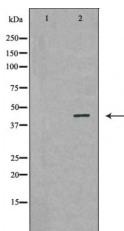
Storage: Rabbit IgG in phosphate buffered saline, pH 7.4, 150mM NaCl, 0.02% sodium azide and 50% glycerol. Store at -20 °C. Stable for 12 months from date of receipt.

Purification: The antiserum was purified by peptide affinity chromatography using SulfoLink™ Coupling Resin (Thermo Fisher Scientific).

Immunogen: A synthesized peptide derived from human Glutamine Synthetase, corresponding to a region within C-terminal amino acids.

Uniprot: P15104

Description: The protein encoded by this gene belongs to the glutamine synthetase family. It catalyzes the synthesis of glutamine from glutamate and ammonia. Glutamine is a main source of energy and is involved in cell proliferation, inhibition of apoptosis, and cell signaling. This gene is expressed during early fetal stages, and plays an important role in controlling body pH by removing ammonia from circulation. Mutations in this gene are associated with congenital glutamine deficiency. Several alternatively spliced transcript variants have been found for this gene.



Western blot analysis of Mouse liver tissue lysates, using GLUL Ab. The lane on the left was treated with the antigen-specific peptide.

IMPORTANT: For western blot, incubate membrane with diluted primary Ab in 5% w/v milk, 1X TBS, 0.1% Tween@20 at 4°C with gentle shaking, overnight.

For Research Use Only. Not for use in diagnostic and therapeutic procedures. Not for resale without express authorization.