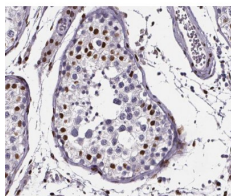


CREB-BP Ab

[References\(2\)](#) [Images\(3\)](#)

Cat.#: AF0139	Concn.: ~1mg/ml	Mol.Wt.: 265kDa
Size:	Source: Rabbit	Clonality: Polyclonal
Application:	WB 1:500-1:3000, IHC 1:50-1:200, IF/ICC: 1:100-1:500 *The optimal dilutions should be determined by the end user.	
Reactivity:	Human,Mouse	
Storage:	Rabbit IgG in phosphate buffered saline , pH 7.4, 150mM NaCl, 0.02% sodium azide and 50% glycerol. Store at -20 °C. Stable for 12 months from date of receipt.	
Purification:	The antiserum was purified by peptide affinity chromatography using SulfoLink™ Coupling Resin (Thermo Fisher Scientific).	
Immunogen:	A synthesized peptide derived from human CREB-BP, corresponding to a region within C-terminal amino acids.	
Uniprot:	Q92793	
Description:	CBP a protein acetyltransferase that can transcriptionally activate histones. Acetylates the NCOA3 coactivator. Binds specifically to phosphorylated CREB1 and enhances its transcriptional activity toward cAMP-responsive genes. Methylation of the KIX domain by CARM1 blocks association with CREB, blocking CREB signaling, and activating the apoptotic response. Found in a complex containing NCOA2, NCOA3, IKKA, IKKB, and IKBKG. Probably part of a complex with HIF1A and EP300.	



AF0139 at 1/200 staining human testis tissue sections by IHC-P. The tissue was formaldehyde fixed and a heat mediated antigen retrieval step in citrate buffer was performed. The tissue was then blocked and incubated with the Ab for 1.5 hours at 22°C. An HRP conjugated goat anti-rabbit Ab was used as the secondary Ab.

IMPORTANT: For western blot, incubate membrane with diluted primary Ab in 5% w/v milk , 1X TBS, 0.1% Tween@20 at 4°C with gentle shaking, overnight.

For Research Use Only. Not for use in diagnostic and therapeutic procedures. Not for resale without express authorization.