

## GYS1 Ab

[Images\(1\)](#)

Cat.#: BF0469	Concn.: ~1mg/ml	Mol.Wt.: 85kDa
Size:	Source: Mouse	Clonality: Monoclonal

**Application:** ELISA 1:10000, WB 1:500-1:2000, FCM 1:200-1:400  
\*The optimal dilutions should be determined by the end user.

**Reactivity:** Human, Mouse

**Storage:** Mouse IgG1 in phosphate buffered saline (without Mg<sup>2+</sup> and Ca<sup>2+</sup>), pH 7.4, 150mM NaCl, 0.02% sodium azide and 50% glycerol. Store at -20 °C. Stable for 12 months from date of receipt.

**Purification:** Affinity-chromatography.

**Immunogen:** Purified recombinant fragment of human GYS1 expressed in E. Coli.

**Uniprot:** P13807

**Description:** GYS1 muscle glycogen synthase 1. Transfers glucosyl residue from UDP-glucose to glycogen. Regulated allosterically by glucose-6-phosphate, and by PKA-mediated phosphorylation.

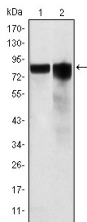


Figure 1: Western blot analysis using GYS1 mouse mAb against Hela (1) and HEK293 (2) cell lysate.

**IMPORTANT:** For western blot, incubate membrane with diluted primary Ab in 5% w/v milk, 1X TBS, 0.1% Tween@20 at 4°C with gentle shaking, overnight.

For Research Use Only. Not for use in diagnostic and therapeutic procedures. Not for resale without express authorization.