

ATF2 Ab

[Images\(1\)](#)

| | | |
|---------------|---|-----------------------|
| Cat.#: BF0280 | Concn.: ~1mg/ml | Mol.Wt.: 55kDa |
| Size: | Source: Mouse | Clonality: Monoclonal |
| Application: | ELISA 1:10000, WB 1:500-1:2000, IHC 1:200-1:1000, IF/ICC 1:100-1:500 *The optimal dilutions should be determined by the end user. | |
| Reactivity: | Human,Mouse | |
| Storage: | Mouse IgG1 in phosphate buffered saline (without Mg ²⁺ and Ca ²⁺), pH 7.4, 150mM NaCl, 0.02% sodium azide and 50% glycerol. Store at -20 °C. Stable for 12 months from date of receipt. | |
| Purification: | Affinity-chromatography. | |
| Immunogen: | Purified recombinant fragment of human ATF2 expressed in E. Coli. | |
| Uniprot: | P15336 | |
| Description: | This gene encodes a transcription factor that is a member of the leucine zipper family of DNA binding proteins. This protein binds to the cAMP-responsive element (CRE), an octameric palindrome. The protein forms a homodimer or heterodimer with c-Jun and stimulates CRE-dependent transcription. The protein is also a histone acetyltransferase (HAT) that specifically acetylates histones H2B and H4 in vitro; thus it may represent a class of sequence-specific factors that activate transcription by direct effects on chromatin components. Additional transcript variants have been identified but their biological validity has not been determined. | |

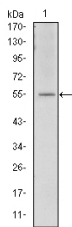


Figure 1: Western blot analysis using ATF2 mouse mAb against NIH/3T3 cell lysate.

IMPORTANT: For western blot, incubate membrane with diluted primary Ab in 5% w/v milk, 1X TBS, 0.1% Tween@20 at 4°C with gentle shaking, overnight.

For Research Use Only. Not for use in diagnostic and therapeutic procedures. Not for resale without express authorization.