

GFP-tag Ab

[References\(15\)](#) [Images\(7\)](#)

Cat.#: T0005
Size:

Concn.: ~1mg/ml
Source: Mouse

Mol.Wt.:
Clonality: Monoclonal

Application:

WB 1:3000-1:10000, IHC 1:50-1:200, IF/ICC: 1:100-1:500, IP 1:100-1:500
*The optimal dilutions should be determined by the end user.

Reactivity:

All

Storage:

Mouse IgG1 in phosphate buffered saline (without Mg²⁺ and Ca²⁺), pH 7.4, 150mM NaCl, 0.02% sodium azide and 50% glycerol. Store at -20 °C. Stable for 12 months from date of receipt.

Purification:

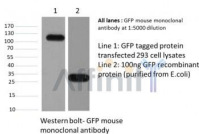
Affinity-chromatography.

Immunogen:

Full-length GFP protein.

Description:

N/A



Western blot analysis of GFP Mouse Monoclonal Ab expression in GFP-tag recombinant protein sample.

IMPORTANT: For western blot, incubate membrane with diluted primary Ab in 5% w/v milk, 1X TBS, 0.1% Tween@20 at 4°C with gentle shaking, overnight.

For Research Use Only. Not for use in diagnostic and therapeutic procedures. Not for resale without express authorization.